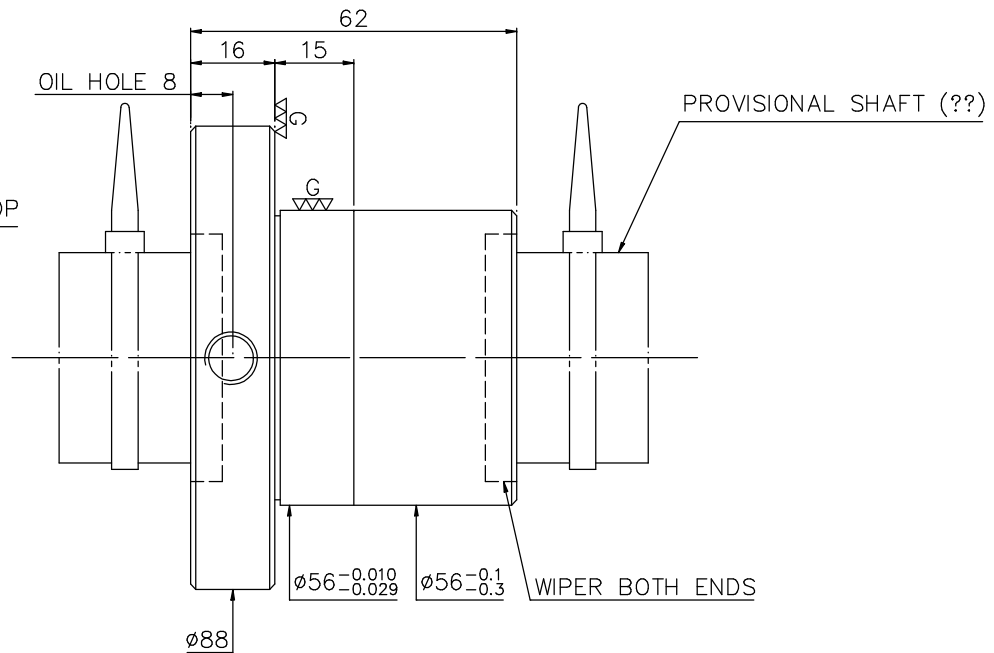
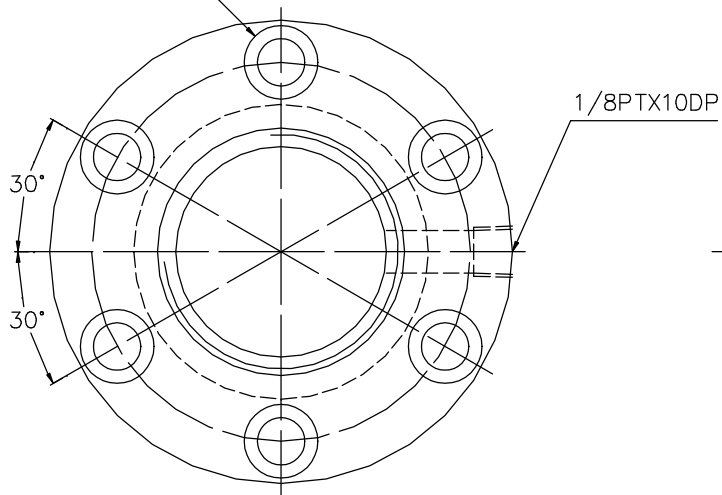


1 A119QBA1

2 Released by HIWIN design group.

4 $\nabla \nabla$ ($\nabla \nabla \nabla$)

6- $\phi 9$ THRU $\phi 14 \times 8.5$ DP
BCD 72



NOTE: STEEL BALL TOLERANCE MUST BE IN THE RANGE OF $-0.0025, -0.01$.
(???? $-0.0025, -0.01$)

PRELOAD (kgf)	-
R.D.	-
S.F. (kgf)	-----
DRAG TORQUE (kgf-cm)	-----
DIRECTION OF TURN	R
P.C. DIA.	40.5
BALL DIA.	3.969
BACKLASH	0.03MAX
CIRCUIT	4
LEAD ANGLE	2.86
DYNAMIC (kgf)	1929
STATIC (kgf)	5776
LEAD	6.35

SPEC: R40-6.35T4-FSI

MAX. AXIAL LOAD (kgf)	LUBRICATION	SPACE BALL
MAX. ROTATIONAL SPEED (rpm)	EI TYPE ASSEMBLY METHOD	CIRCUIT
DN VALUE	CUSTOMER DRAWING NO.	LEAD ANGLE
MAX. FEED RATE (m/min)	CUSTOMER MC TYPE	DYNAMIC (kgf)
ACCELERATION (m/sec ²)	CUSTOMER AXIAL TYPE	STATIC (kgf)
SUPPORT METHOD		LEAD

	UNCHAMFERED USE <input type="checkbox"/> RO.5 <input checked="" type="checkbox"/> R1 <input type="checkbox"/> OR	SCALE 1: X	MAT. SH: ROLLED	DATE 2008.04.25
	ROUGH M/C FIN M/C GRD	25 μ 6.3 μ 0.4 μ	NT: SNCM220/Equivalent	DWG JANET
NORMAL TOLERANCE mm		APPD MICHELLE		
UP TO 6 30 120 300 600 1200 2400		THREAD BALL TRACK HRC 56 ~ 62		
±0.1 ±0.2 ±0.3 ±0.4 ±0.5 ±0.8 ±1.0 ±1.5		PROCESS NO. G		
e300: -		CUSTR H-CHICAGO		
E: -		DWG.NO. A119QBA1		

*BREAK SHARP EDGE UNLESS OTHER SPECIFIED.
*??????RO.5MAX
● THREAD END ALLOWS ABOVE LENGTH OUT OF HARDNESS TOLERANCE

DATE	MODIFICATION	APPROVED

* PLEASE IGNORE CHINESE CHARACTERS WHICH ARE FOR OUR REFERENCE ONLY.

HIWIN BALLSCREWS