

1
A11VH7A1

2
Released by HIWIN design group.

3
▽▽ (▽▽▽)

4

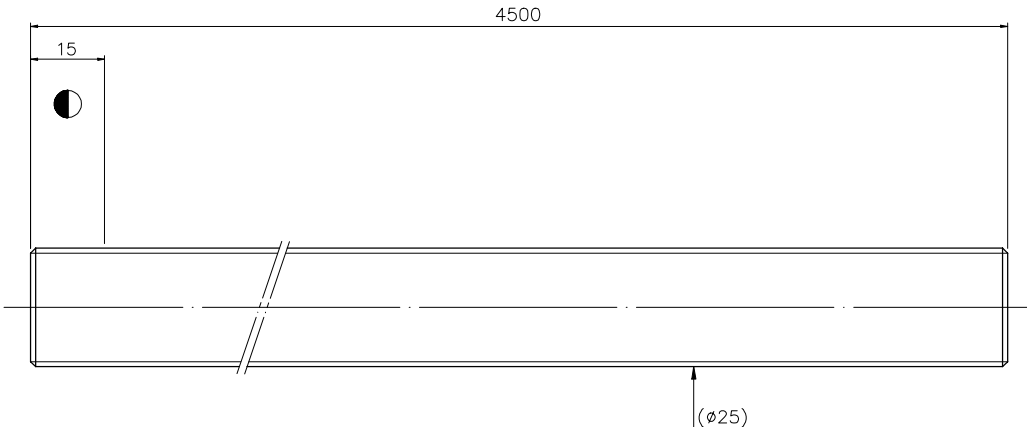
5

6

7

8

9



PRELOAD(kgf)	~
R.D.	21.825
S.F. (kgf)	~
DRAG TORQUE(Ngf-cm)	~
DIRECTION OF TURN	R
P.C. DIA.	25.881

SPEC:R25-6.35-4500-4500-0.05

MAX. AXIAL LOAD(kgf)	LUBRICATION	BALL DIA.
MAX. ROTATIONAL SPEED (rpm)	SPACE BALL	BACKLASH
DN VALUE	EI TYPE ASSEMBLY METHOD	CIRCUIT
MAX. FEED RATE (m/min)	CUSTOMER DRAWING NO.	LEAD ANGLE
ACCELERATION (m/sec ²)	CUSTOMER WC TYPE	DYNAMIC (kgf)
SUPPORT METHOD	CUSTOMER AXIAL TYPE	STATIC (kgf)
		LEAD

THREAD LENGTH	LUNCHAMFERED USE <input type="checkbox"/> CO.5 <input checked="" type="checkbox"/> C1 <input type="checkbox"/> C	SCALE	MAT. SH: CF53/Equivalent	DATE
	ROUGH W/C/FIN W/C/GRD <input type="checkbox"/> 25 <input type="checkbox"/> 30 <input type="checkbox"/> 40 <input type="checkbox"/> 45 <input type="checkbox"/> 50	1: X	DATE	2010.12.17
	NORMAL TOLERANCE mm		THREAT BALL TRACK	CHK
	UP 6 15 30 120 300 600 1200 2400 (OVER)		HRC 50 ~ 62	APPD
	TO ±0.1 ±0.2 ±0.3 ±0.4 ±0.5 ±0.8 ±1.0 ±1.5		CUSTR	Lady
	HIWIN BALLSCREWS		HIWIN STD.	
			DWG.NO.	A11VH7A1

*BREAK SHARP EDGE UNLESS OTHER SPECIFIED.
*未量削均去毛邊 (CO.2MAX)
● THREAD END ALLOWS ABOVE LENGTH OUT OF HARDNESS TOLERANCE

DATE	MODIFICATION	APPROVED

* PLEASE IGNORE CHINESE CHARACTERS WHICH ARE FOR OUR REFERENCE ONLY.