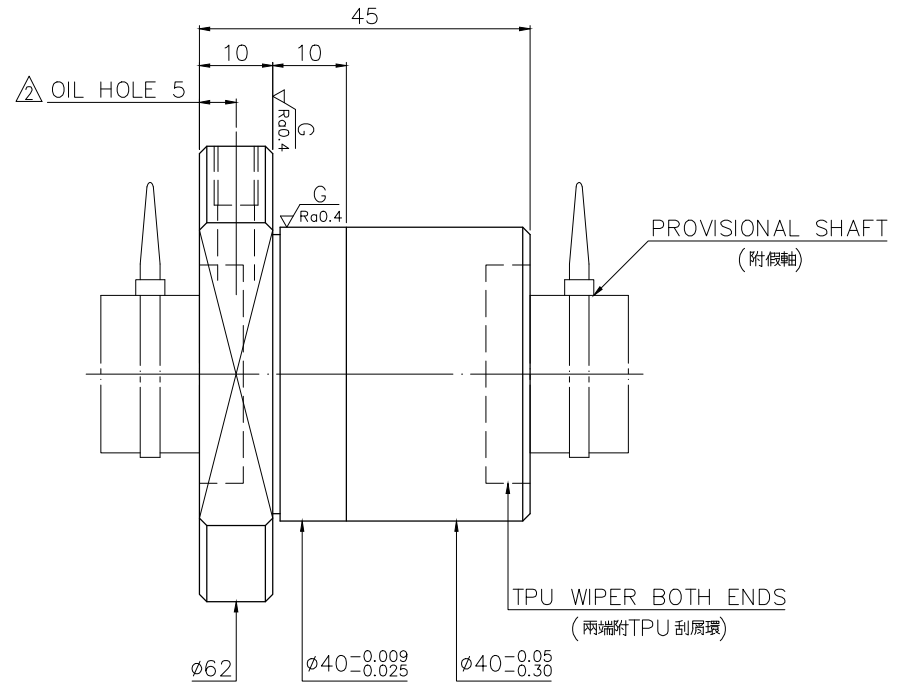
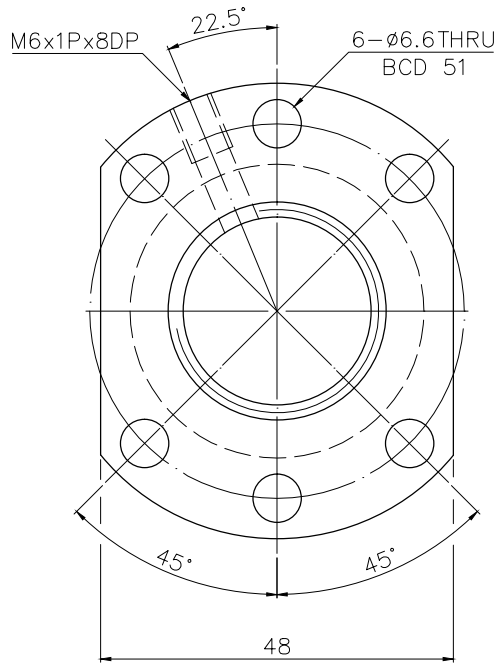


A122XTA2

More Confidential

$\sqrt{Ra6.3}$ ($\sqrt{Ra0.4}$)



NOTE:

1. CORRESPONDING SHAFT HAS A ROOT DIAMETER OF 21.429mm

PRELOAD(kgf)	~
R.D.	~
S.F. (kgf)	~
DRAG TORQUE(kg-cm)	~
DIRECTION OF TURN	R
P.C. DIA.	24.56
BALL DIA.	3
BACKLASH	Δ 0.03MAX
CIRCUIT	4
LEAD ANGLE	3.71
DYNAMIC (kgf)	1670
STATIC (kgf)	3700
LEAD	5

SPEC: R25-5K4-FSCEW-E

MAX. AXIAL LOAD(kgf)	LUBRICATION	BALL DIA.	3
MAX. ROTATIONAL SPEED (rpm)	SPACE BALL	BACKLASH	Δ 0.03MAX
DN VALUE	E1 TYPE ASSEMBLY METHOD	CIRCUIT	4
MAX. FEED RATE (m/min)	CUSTOMER DRAWING NO.	LEAD ANGLE	3.71
ACCELERATION (m/sec ²)	CUSTOMER MC TYPE	DYNAMIC (kgf)	1670
SUPPORT METHOD	CUSTOMER AXIAL TYPE	STATIC (kgf)	3700
		LEAD	5

UNCHAMFERED USE CO.5 C1 C

ROUGH M/C FIN M/C GRD SCALE 1: X

$\sqrt{Ra25}$ $\sqrt{Ra6.3}$ $\sqrt{Ra0.4}$

NORMAL TOLERANCE mm

UP	6	30	120	300	600	1200	2400	OVER
TQ	±0.1	±0.2	±0.3	±0.4	±0.5	±0.8	±1.0	±1.5

THREAD LENGTH

$\sqrt{300p}$

ep: ~

HIWIN® BALLSCREWS

MAT.	SH:ROLLED	DATE	2017.10.24
	NT:SNM220/Equivalent	DWG	Yolin
THREAD BALL TRACK	CHK	Hani	
HRC 56 ~ 62	APPD	Michelle	
CUSTR	HIWIN STD.		
DWG.NO.	A122XTA2		

*BREAK SHARP EDGE UNLESS OTHER SPECIFIED.
*未畫倒角者去毛邊 (CO.2MAX)

● THREAD END ALLOWS ABOVE LENGTH OUT OF HARDNESS TOLERANCE

2017.10.24	MOD.	Δ ~ Δ	Michelle
DATE	MODIFICATION	APPROVED	

* PLEASE IGNORE CHINESE CHARACTERS WHICH ARE FOR OUR REFERENCE ONLY.