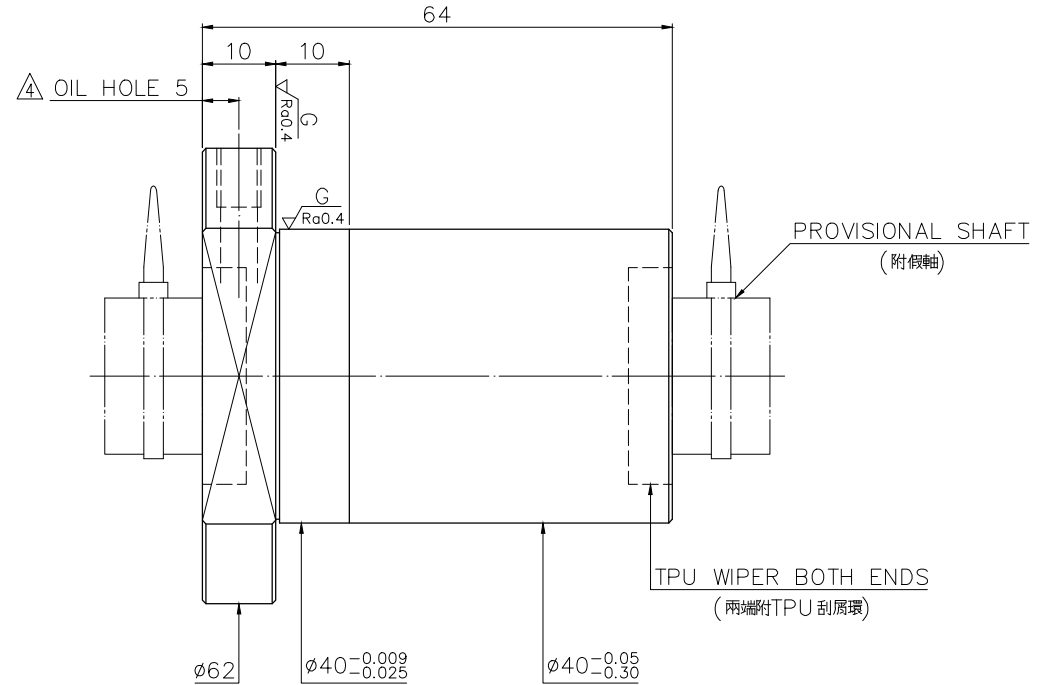
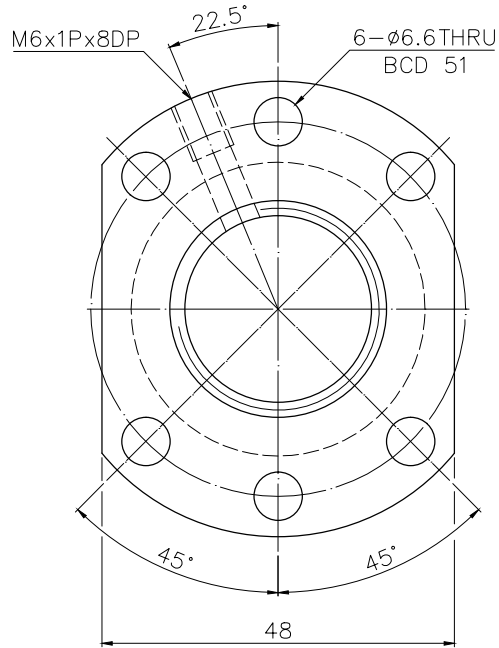


A122XUA2

More Confidential

$\sqrt{Ra6.3}$ ($\sqrt{Ra0.4}$)



NOTE:

1. CORRESPONDING SHAFT HAS A ROOT DIAMETER OF 21.239mm

PRELOAD(kgf)	~
R.D.	~
S.F. (kgf)	~
DRAG TORQUE(kgf-cm)	~
DIRECTION OF TURN	R
P.C. DIA.	24.37
BALL DIA.	3
BACKLASH	0.03MAX
CIRCUIT	4
LEAD ANGLE	7.44
DYNAMIC (kgf)	1660
STATIC (kgf)	3680
LEAD	10

SPEC: R25-10K4-FSCEW-E

MAX. AXIAL LOAD(kgf)	LUBRICATION	BALL DIA.	3
MAX. ROTATIONAL SPEED (rpm)	SPACE BALL	BACKLASH	0.03MAX
DN VALUE	E1 TYPE ASSEMBLY METHOD	CIRCUIT	4
MAX. FEED RATE (m/min)	CUSTOMER DRAWING NO.	LEAD ANGLE	7.44
ACCELERATION (m/sec ²)	CUSTOMER MC TYPE	DYNAMIC (kgf)	1660
SUPPORT METHOD	CUSTOMER AXIAL TYPE	STATIC (kgf)	3680
		LEAD	10

<p>THREAD LENGTH</p> <p>300p: ~</p> <p>ep: ~</p>	<p>UNCHAMFERED USE</p> <p>ROUGH M/C FIN M/C GRD</p> <p>SCALE 1: X</p> <p>NORMAL TOLERANCE mm</p> <table border="1"> <tr><th>UP</th><th>6</th><th>30</th><th>120</th><th>300</th><th>600</th><th>1200</th><th>2400</th><th>OVER</th></tr> <tr><td>±0.1</td><td>±0.2</td><td>±0.3</td><td>±0.4</td><td>±0.5</td><td>±0.8</td><td>±1.0</td><td>±1.5</td><td></td></tr> </table>	UP	6	30	120	300	600	1200	2400	OVER	±0.1	±0.2	±0.3	±0.4	±0.5	±0.8	±1.0	±1.5		<p>MAT. SH.ROLLED</p> <p>NT:SNM220/Equivalent</p> <p>DATE 2017.10.24</p> <p>DWG Yolín</p> <p>CHK Haní</p> <p>APPD Michelle</p>
UP	6	30	120	300	600	1200	2400	OVER												
±0.1	±0.2	±0.3	±0.4	±0.5	±0.8	±1.0	±1.5													
<p>DATE 2017.10.24</p> <p>MODIFICATION</p> <p>APPROVED</p>	<p>HIWIN® BALLSCREWS</p>	<p>CUSTR</p> <p>DWG.NO.</p>																		

*BREAK SHARP EDGE UNLESS OTHER SPECIFIED.
*未畫倒角者去毛邊 (CO.2MAX)

● THREAD END ALLOWS ABOVE LENGTH OUT OF HARDNESS TOLERANCE

* PLEASE IGNORE CHINESE CHARACTERS WHICH ARE FOR OUR REFERENCE ONLY.

