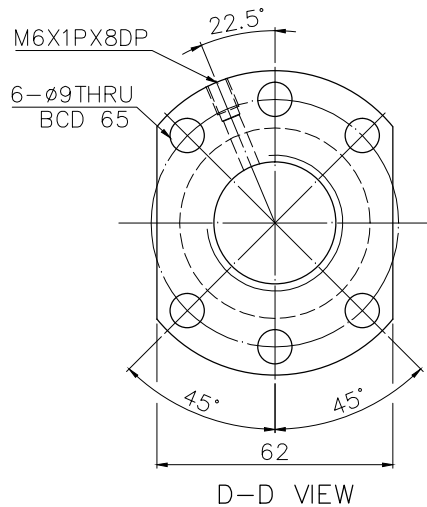
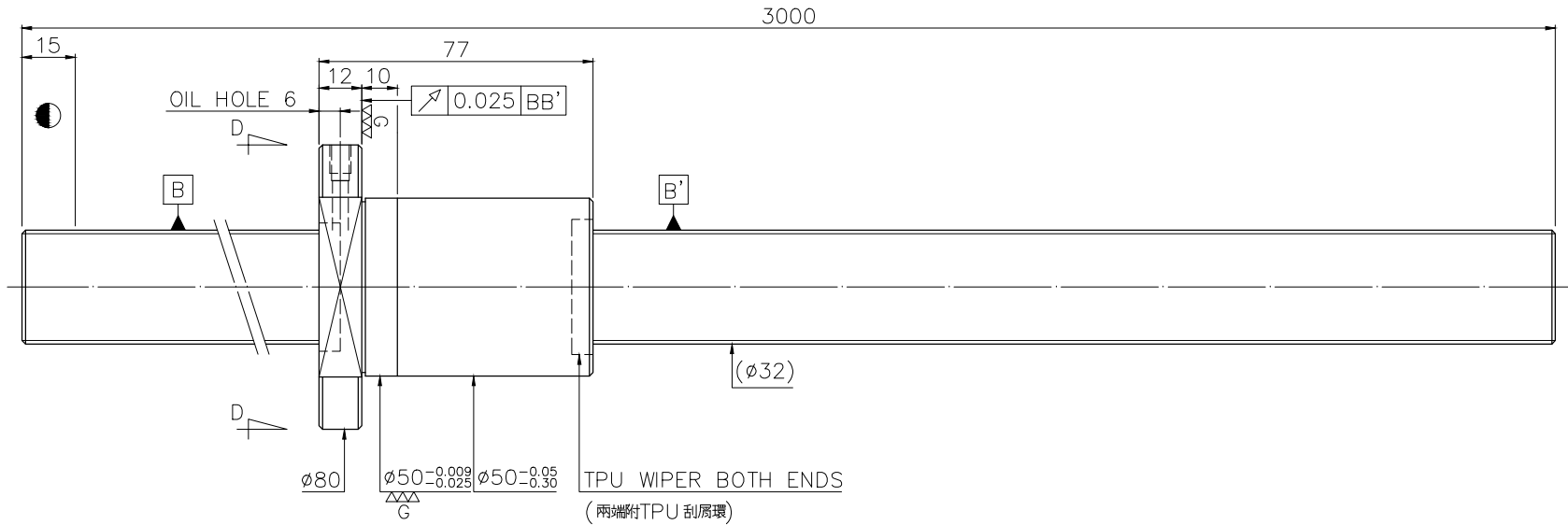


A12EW7A2

Released by HIWIN design group.

∇G (∇VV)



PRELOAD(kgf)	136
R.D.	27.424
S.F. (kgf)	0.16~1.93
DRAG TORQUE(kgf-cm)	0.51~6.29
DIRECTION OF TURN	R
P.C. DIA.	31.48
BALL DIA.	3.969
BACKLASH	0
CIRCUIT	5
LEAD ANGLE	5.77
DYNAMIC (kgf)	3390
STATIC (kgf)	8160
LEAD	10

SPEC: R32-10K5- FSCEW-3000-3000-0.023

MAX. AXIAL LOAD (kgf)	LUBRICATION	BALL DIA.	3.969
MAX. ROTATIONAL SPEED (rpm)	SPACE BALL	BACKLASH	0
DN VALUE	E1 TYPE ASSEMBLY METHOD	CIRCUIT	5
MAX. FEED RATE (m/min)	CUSTOMER DRAWING NO.	LEAD ANGLE	5.77
ACCELERATION (m/sec ²)	CUSTOMER MC TYPE	DYNAMIC (kgf)	3390
SUPPORT METHOD	CUSTOMER AXIAL TYPE	STATIC (kgf)	8160
		LEAD	10

	UNCHAMFERED USE <input type="checkbox"/> C0.5 <input checked="" type="checkbox"/> C1 <input type="checkbox"/> C ROUGH M/C/FIN M/C/C GRD SCALE 1: X	MAT. SH: CF53/Equivalent DATE 2013.12.20
NORMAL TOLERANCE mm UP TO 6 30 120 300 600 1200 2400 OVER ±0.1 ±0.2 ±0.3 ±0.4 ±0.5 ±0.8 ±1.0 ±1.5	INT: SNCM220/Equivalent DWG Kent THREAD BALL TRACK CHK Akuan HRC 56 ~ 62 APPD Kai	
CUSTR H-CHICAGO DWG.NO. A12EW7A2		

*BREAK SHARP EDGE UNLESS OTHER SPECIFIED.
 *未量倒角者去毛邊 (CO.2MAX)
 ● THREAD END ALLOWS ABOVE LENGTH OUT OF HARDNESS TOLERANCE.

2013.12.20	MOD.	Kai
DATE	MODIFICATION	APPROVED

* PLEASE IGNORE CHINESE CHARACTERS WHICH ARE FOR OUR REFERENCE ONLY.

HIWIN BALLSCREWS