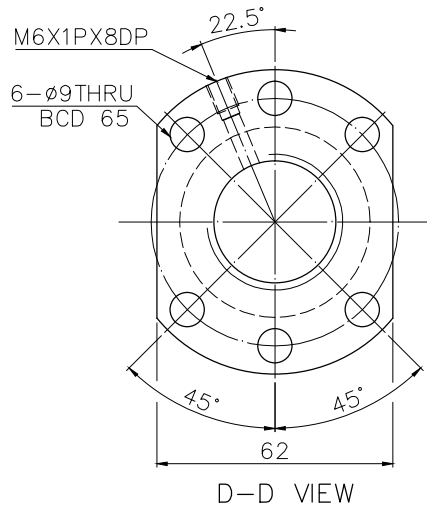
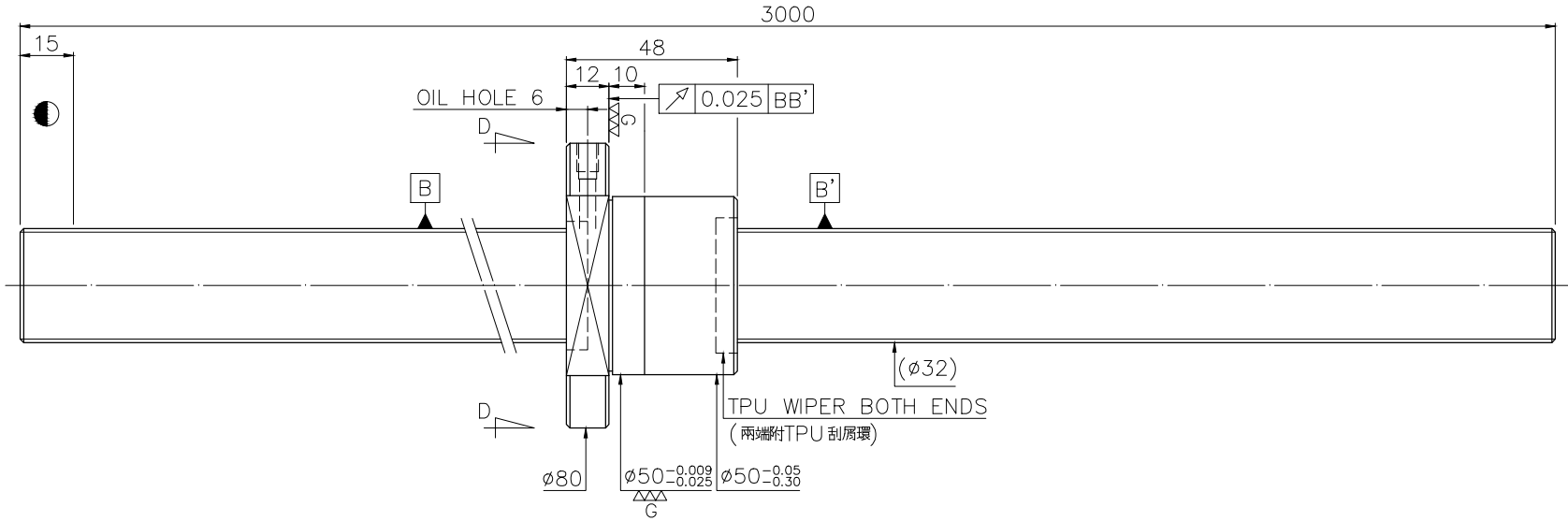


A12EW8A2

Released by HIWIN design group.

$\nabla \nabla (\nabla \nabla \nabla)$



PRELOAD(kgf)	119
R.D.	29.124
S.F. (kgf)	0.1~1.21
DRAG TORQUE(kgf-cm)	0.32~3.96
DIRECTION OF TURN	R
P.C. DIA.	32.4
BALL DIA.	3.175
BACKLASH	0
CIRCUIT	6
LEAD ANGLE	2.81
DYNAMIC (kgf)	2980
STATIC (kgf)	8190
LEAD	5

SPEC: R32-5K6- FSCEW-3000-3000-0.023

MAX. AXIAL LOAD (kgf)		LUBRICATION		BALL DIA.	3.175
MAX. ROTATIONAL SPEED (rpm)		SPACE BALL		BACKLASH	0
DN VALUE		E1 TYPE ASSEMBLY METHOD		CIRCUIT	6
MAX. FEED RATE (m/min)		CUSTOMER DRAWING NO.		LEAD ANGLE	2.81
ACCELERATION (m/sec ²)		CUSTOMER MC TYPE		DYNAMIC (kgf)	2980
SUPPORT METHOD		CUSTOMER AXIAL TYPE		STATIC (kgf)	8190
		端塞型式	不出牙	LEAD	5

	UNCHAMFERED USE	<input type="checkbox"/> CO.5	<input checked="" type="checkbox"/> C1	<input type="checkbox"/> C	SCALE	MAT. SH: CF53/Equivalent DATE 2013.12.20 INT: SNCM220/Equivalent DWG Kent THREAD BALL TRACK CHK Akuan HRC 56 ~ 62 APPD Kai		
	ROUGH M/C/FIN M/C/C1	GRD	<input type="checkbox"/> 25g <input type="checkbox"/> 6.3g <input checked="" type="checkbox"/> 0.4g <input type="checkbox"/> $\nabla \nabla \nabla$		1: X			
NORMAL TOLERANCE mm								
UP TO	6	30	120	300	600	1200	2400	OVER
	±0.1	±0.2	±0.3	±0.4	±0.5	±0.8	±1.0	±1.5
CUSTR H-CHICAGO DWG.NO. A12EW8A2								

*BREAK SHARP EDGE UNLESS OTHER SPECIFIED.
 *未量倒角者去毛邊 (CO.2MAX)
 * THREAD END ALLOWS ABOVE LENGTH OUT OF HARDNESS TOLERANCE.

2013.12.20	MOD.	Kai
DATE	MODIFICATION	APPROVED

* PLEASE IGNORE CHINESE CHARACTERS WHICH ARE FOR OUR REFERENCE ONLY.