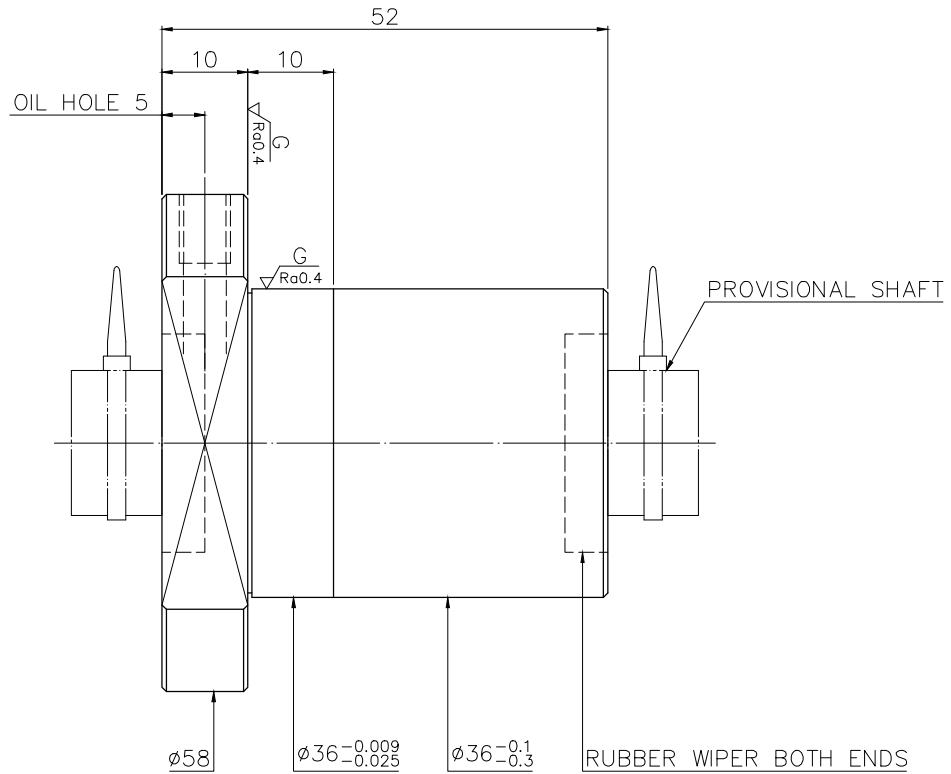
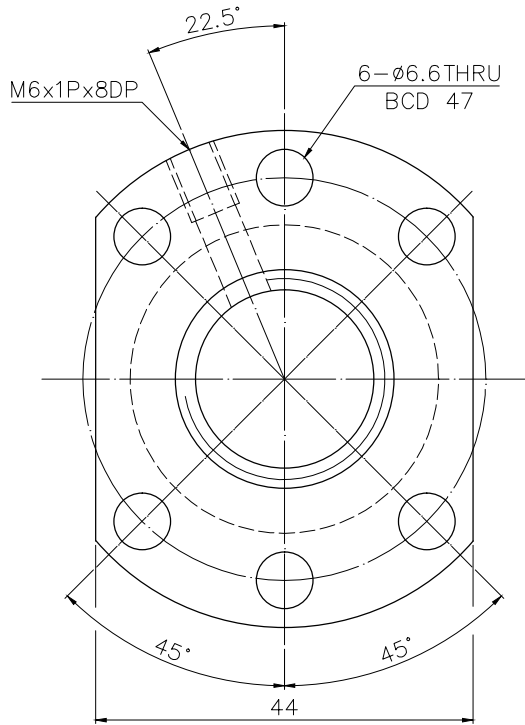


A1AA2TA1

More Confidential

$\sqrt{Ra6.3}$  ( $\sqrt{Ra0.4}$ )

A  
B  
C  
D  
E  
F  
G



PRELOAD(kgf)	~
R.D.	~
S.F. (kgf)	~
DRAG TORQUE(kgf-cm)	~
DIRECTION OF TURN	R
P.C. DIA.	20.2
BALL DIA.	3.175
BACKLASH	0.03MAX
CIRCUIT	4
LEAD ANGLE	4.51
DYNAMIC (kgf)	9.39
STATIC (kgf)	1993
LEAD	5

SPEC: R20-5T4-FSINW

MAX. AXIAL LOAD(kgf)		LUBRICATION		BALL DIA.	3.175
MAX. ROTATIONAL SPEED (rpm)		SPACE BALL		BACKLASH	0.03MAX
DN VALUE		E1 TYPE ASSEMBLY METHOD		CIRCUIT	4
MAX. FEED RATE(m/min)		CUSTOMER DRAWING NO.		LEAD ANGLE	4.51
ACCELERATION(m/sec <sup>2</sup> )		CUSTOMER MC TYPE		DYNAMIC (kgf)	9.39
SUPPORT METHOD		CUSTOMER AXIAL TYPE		STATIC (kgf)	1993
				LEAD	5

THREAD LENGTH

UNCHAMFERED USE  CO.5  C1  C

ROUGH M/C FIN M/C GRD  SCALE 1: X

NORMAL TOLERANCE mm

UP	6	30	120	300	600	1200	2400	OVER
TO	±0.1	±0.2	±0.3	±0.4	±0.5	±0.8	±1.0	±1.5

THREAD BALL TRACK HRC 56 ~ 62

HIWIN® BALLSCREWS

\*BREAK SHARP EDGE UNLESS OTHER SPECIFIED.  
\*未畫倒角者去毛邊 (CO.2MAX)

THREAD END ALLOWS ABOVE LENGTH OUT OF HARDNESS TOLERANCE

2017.04.19	MOD. $\Delta$	Michelle
DATE	MODIFICATION	APPROVED

\* PLEASE IGNORE CHINESE CHARACTERS WHICH ARE FOR OUR REFERENCE ONLY.

MAT.	SH:ROLLED	DATE	2017.04.19
	NT:S55C/Equivalent	DWG	Hani
THREAD BALL TRACK	CHK	Kelly	
HRC 56 ~ 62	APPD	Michelle	
CUSTR	H-CHICAGO		
DWG.NO.	A1AA2TA1		