

1  
A1AA2WA1

2  
More Confidential

3  
 $\sqrt{Ra6.3}$  ( $\sqrt{Ra0.4}$ )

4

5

6

7

8

9

A

B

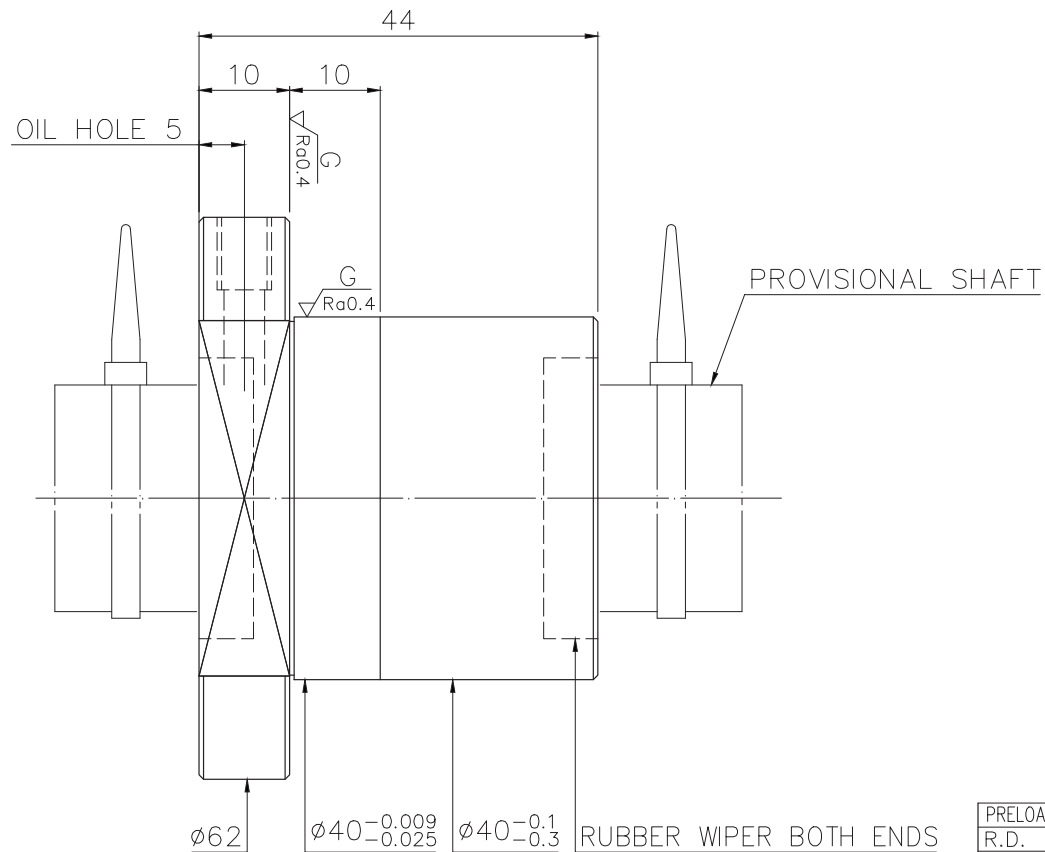
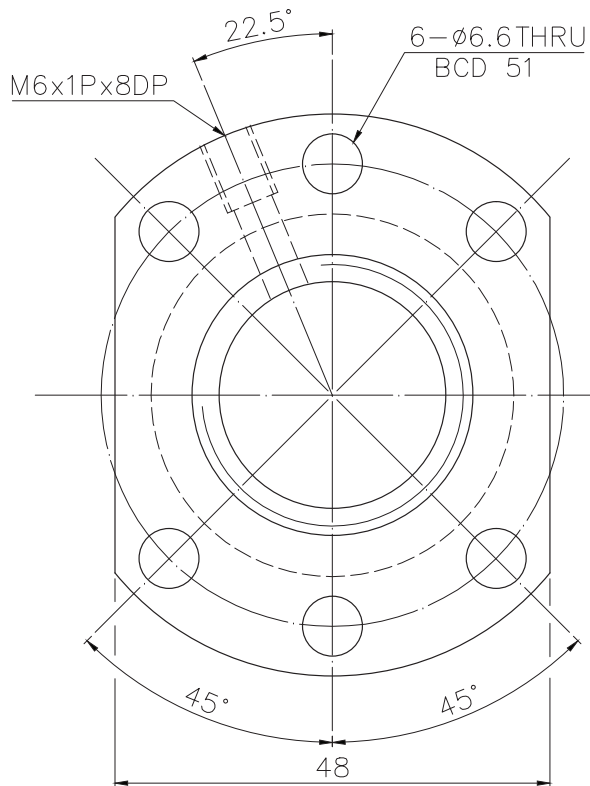
C

D

E

F

G

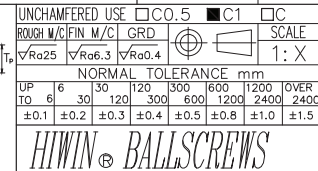
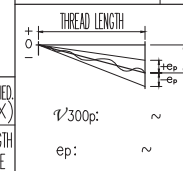


SPEC: R25-5T3-FSINW

MAX. AXIAL LOAD(kgf)	LUBRICATION	PRELOAD(kgf)	~
MAX. ROTATIONAL SPEED (rpm)	SPACE BALL	R.D.	~
DN VALUE	EI TYPE ASSEMBLY METHOD	S.F. (kgf)	~
MAX. FEED RATE (m/min)	CUSTOMER DRAWING NO.	DRAG TORQUE(kgf-cm)	~
ACCELERATION (m/sec <sup>2</sup> )	CUSTOMER MC TYPE	DIRECTION OF TURN	R
SUPPORT METHOD	CUSTOMER AXIAL TYPE	P.C. DIA.	25.57
		BALL DIA.	3.175
		BACKLASH	0.03MAX
		CIRCUIT	3
		LEAD ANGLE	3.56
		DYNAMIC (kgf)	879
		STATIC (kgf)	2082
		LEAD	5

THREAD LENGTH	UNCHAMFERED USE <input type="checkbox"/> CO.5 <input checked="" type="checkbox"/> C1 <input type="checkbox"/> C	SCALE	MAT.	SH-ROLLED	DATE	2017.09.08
	ROUGH M/C FIN M/C GRD	1: X		NT:S55C/Equivalent	DWG	Sandy
	$\sqrt{Ra25}$ $\sqrt{Ra6.3}$ $\sqrt{Ra0.4}$			THREAD BALL TRACK	CHK	Melanie
	NORMAL TOLERANCE mm			HRC 56 ~ 62	APPD	Kelly
	UP 6 30 120 300 600 1200 2400 OVER				CUSTR	H-CHICAGO
	±0.1 ±0.2 ±0.3 ±0.4 ±0.5 ±0.8 ±1.0 ±1.5				DWG.NO.	A1AA2WA1

\*BREAK SHARP EDGE UNLESS OTHER SPECIFIED.  
\*未量倒角者去毛邊 (CO.2MAX)  
● THREAD END ALLOWS ABOVE LENGTH OUT OF HARDNESS TOLERANCE.



DATE	MODIFICATION	APPROVED

\* PLEASE IGNORE CHINESE CHARACTERS WHICH ARE FOR OUR REFERENCE ONLY.