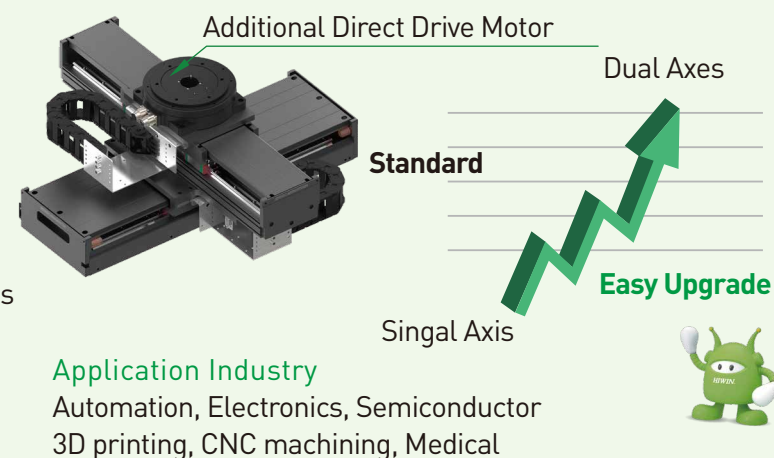


Features

- Short Lead Time
- Easy Installation
- Cost-Effective
- Modularity to save design and assembly time

Perfect Solution with HIWIN Servo Drive

- Multi-Fieldbus Communication Interfaces
- Pulse/voltage interface
- 3.2k Hz speed response
- High Accuracy Position Control
- High Precision Position Trigger Output



SSA XY Highlights

1500 mm/s
Max. Velocity

0.1 μ m
High Resolution

± 0.5 μ m
Great Repeatability

Model Number

LMSSA2X-10S100-13S200-200-200-K A S 0 A 0

Upper Axis Motor Type

10S: 10 Type Iron Core
13S: 13 Type Iron Core

Rated Force Level (N)

100, 200

Lower Axis Motor Type

13S: 13 Type Iron Core
20S: 20 Type Iron Core

Rated Force Level (N)

200, 300

Upper Axis Stroke

200, 250, 300, 350, 400

Lower Axis Stroke

200, 250, 300, 350, 400, 450, 500

Reserved

Input Voltage

A: Standard (220 V)
B: High Voltage(380 V)

Cable Chain

0: None
1: Horizontal

Cover

S: Standard

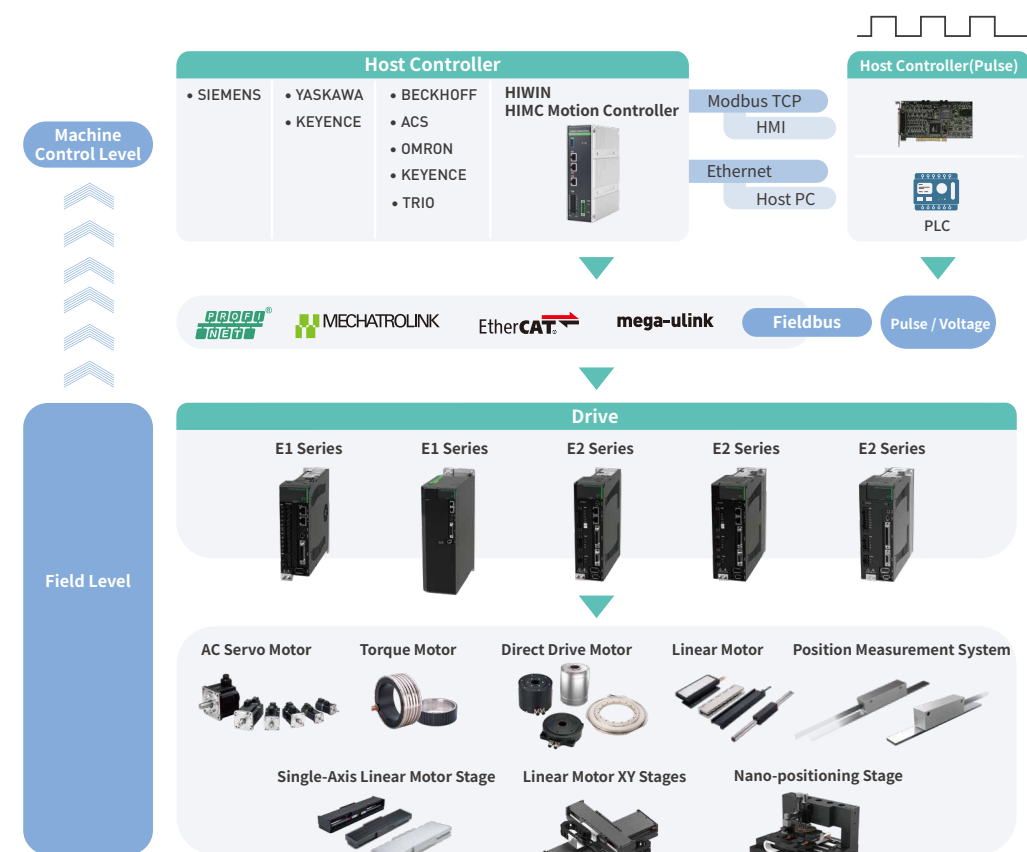
Limit Switch

A: NPN. NC
B: PNP. NC

Encoder

A: Analog Optical
K: Digital 0.1 μ m Resolution Optical
V: Digital 1 μ m Resolution Magnetic

Product Architecture



Note:
EtherCAT® is a registered trademark of Beckhoff Automation Co., Ltd./MECHATROLINK is a registered trademark of MECHATROLINK Members Association. PROFINET® is a registered trademark of PROFIBUS & PROFINET International (PI). Only E1 Series supports PROFINET and MECHATROLINK.

HIWIN® MIKROSYSTEM



High Accuracy / Cost Effective / Short Lead Time



With HIWIN MIKROSYSTEM Drive E1/ E2

HIWIN® MIKROSYSTEM

Global Sales And Customer Service Site

HIWIN MIKROSYSTEM CORP.
No.6, Jingke Central Rd.,
Taichung Precision Machinery Park,
Taichung 40852, Taiwan
Tel: +886-4-2355-0110
Fax: +886-4-2355-0123
www.hiwinmikro.tw
business@hiwinmikro.tw

HIWIN GmbH
OFFENBURG, GERMANY
www.hiwin.de
www.hiwin.eu
info@hiwin.de

HIWIN Schweiz GmbH
JONA, SWITZERLAND
www.hiwin.ch
info@hiwin.ch

HIWIN KOREA
SUWON - CHANGWON, KOREA
www.hiwin.kr
info@hiwin.kr

HIWIN JAPAN
KOBE · TOKYO · NAGOYA · TOHOKU ·
NAGANO · SHIZUOKA · HOKURIKU ·
HIROSHIMA · FUKUOKA · KUMAMOTO,
JAPAN
www.hiwin.co.jp
info@hiwin.co.jp

HIWIN s.r.o.
BRNO, CZECH REPUBLIC
www.hiwin.cz
info@hiwin.cz

HIWIN CHINA
SUZHOU, CHINA
www.hiwin.cn
info@hiwin.cn

HIWIN USA
CHICAGO, U.S.A.
www.hiwin.us
info@hiwin.com

HIWIN FRANCE
STRASBOURG, FRANCE
www.hiwin.fr
info@hiwin.de

Mega-Fabs Motion Systems, Ltd.
HAIFA, ISRAEL
www.mega-fabs.com
info@mega-fabs.com

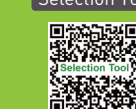
HIWIN Srl
BRUGHERIO, ITALY
www.hiwin.it
info@hiwin.it

HIWIN SINGAPORE
SINGAPORE
www.hiwin.sg
info@hiwin.sg

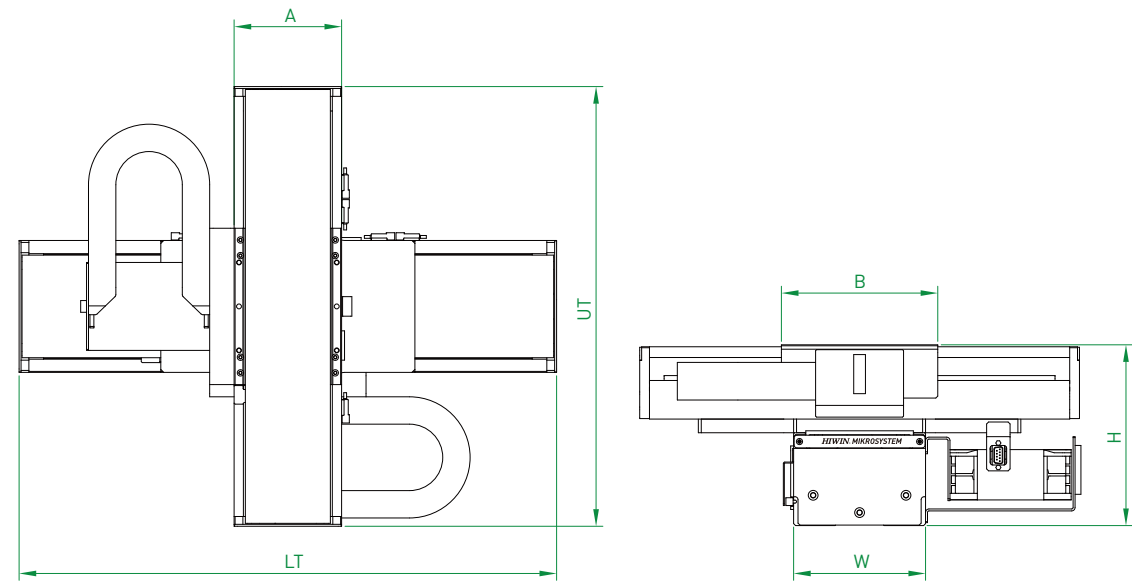
SSA XY Series

Linear Motor XY Stages

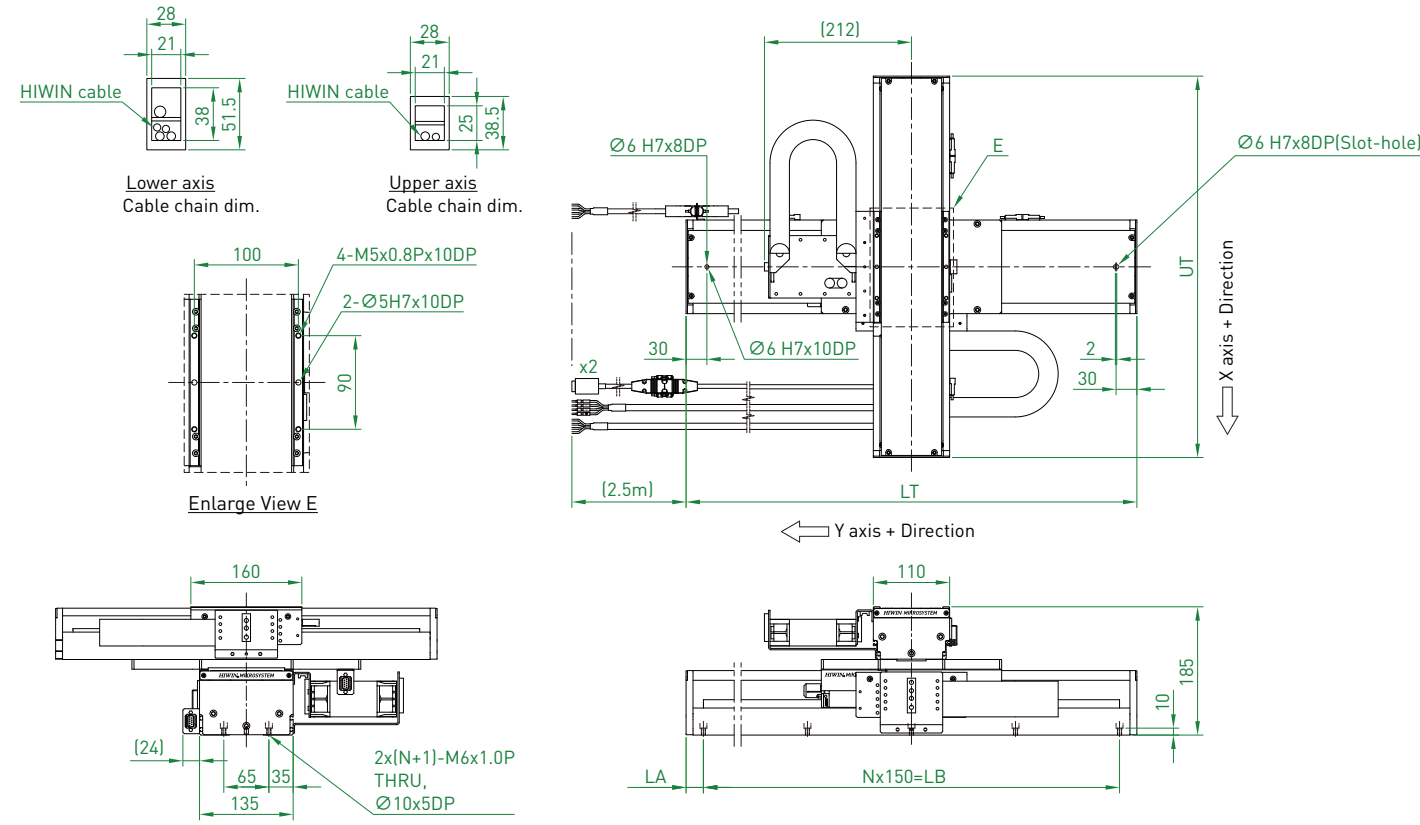
Selection Tool



Product Specification

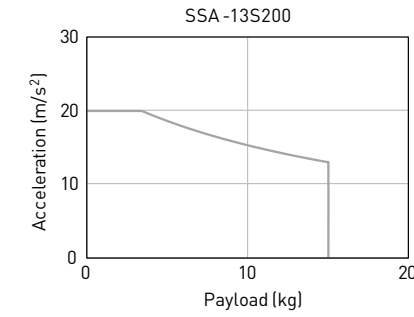
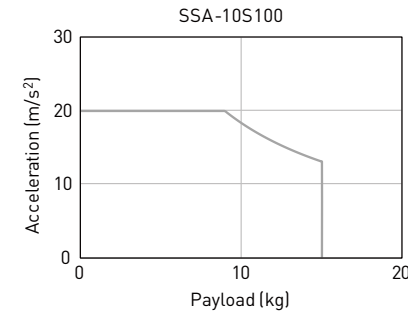


10S100 x 13S200

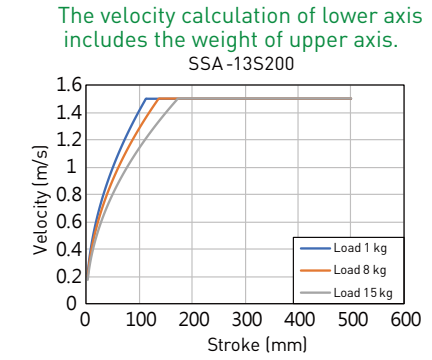
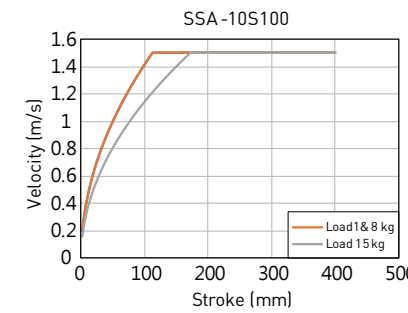


Stroke Upper x Lower	Dimension				
	UT	LT	N	LA	LB
200x200	450	550	3	50	450
250x250	500	600	3	75	450
300x300	550	650	4	25	600
350x350	600	700	4	50	600
400x400	650	750	4	75	600
400x450	650	800	5	25	750
400x500	650	850	5	50	750

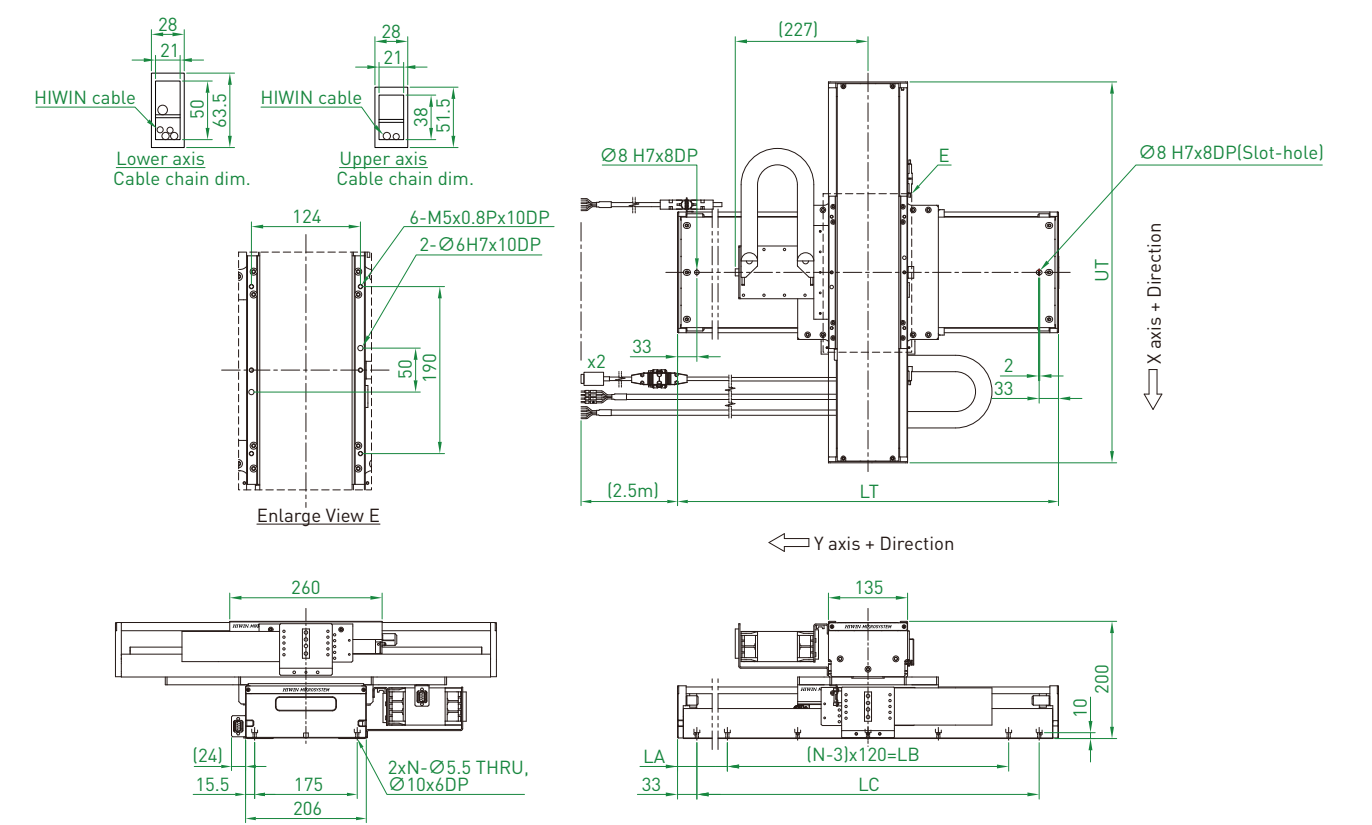
Acceleration-Mass



Velocity-Mass

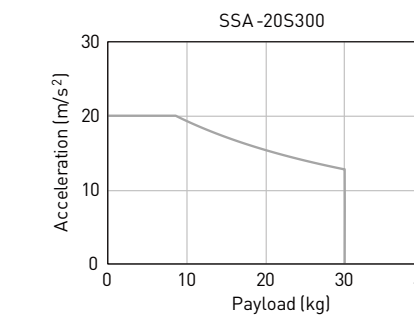
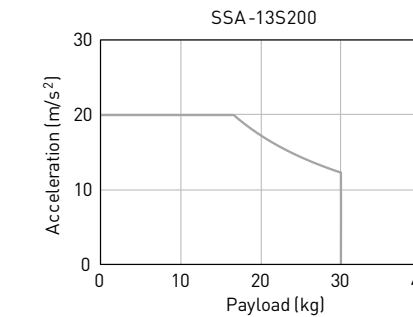


13S200 x 20S300

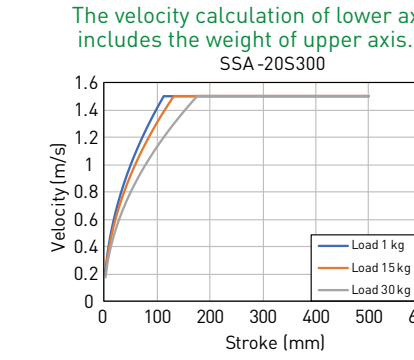
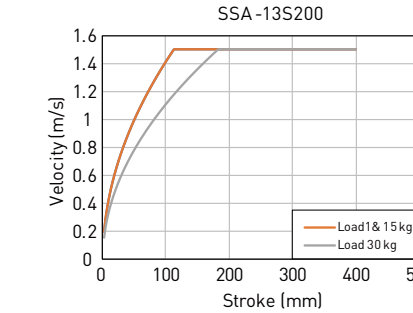


Stroke Upper x Lower	Dimension					
	UT	LT	N	LA	LB	LC
200x200	550	550	5	155	240	484
250x250	600	600	7	60	480	534
300x300	650	650	7	85	480	584
350x350	700	700	7	110	480	634
400x400	750	750	7	135	480	684
400x450	750	800	7	160	480	734
400x500	750	850	9	65	720	784

Acceleration-Mass



Velocity-Mass



Model		10S100 x 13S200								13S200 x 20S300								
Dimension	Item	Unit	Upper x Lower								Upper x Lower							
	Stroke	mm	200x200	250x250	300x300	350x350	400x400	400x450	400x500	200x200	250x250	300x300	350x350	400x400	400x450	400x500		
	Carriage Width [A]	mm	110								135							
	Carriage Length [B]	mm	160								260							
	Base Width [W]	mm	135								206							
	Height [H]	mm	185								200							
	Upper Axis Length [UT]	mm	450	500	550	600	650	650	650	550	600	650	700	750	750	750		
	Lower Axis Length [LT]	mm	550	600	650	700	750	800	850	550	600	650	700	750	800	850		
Specification	Continuous Force	Upper Axis	103								205							
		Lower Axis	205								362							
	Peak Force	Upper Axis	289								579							
		Lower Axis	579								1023							
	Max. Velocity [Note 3]	m/s	1.5															
	Max. Acceleration [Note 3]	m/s ²	20															
	Max. Payload	kg	15								30							
	Encoder Resolution	-	Analog optical / Digital 0.1µm resolution optical/ Digital 1µm resolution magnetic															
Repeatability	µm	±0.5 / ±1 / ±2																
Accuracy	µm	±1 / ±2 / ±4																
Vertical Straightness	-	±8 µm / 300 mm																
Horizontal Straightness	-	±8 µm / 300 mm																
Orthogonality	arc-sec	10 [Center Stroke 200 x 200 mm area]																
Stage Weight	kg	28.3	29.4	30.7	32.1	33.6	34.4	35	39	40.9	42.9	44.8	46.8	47.9	49.1			
Cable Chain Type	Upper Axis	-	1400.025.048.0								1400.038.048.0							
	Lower Axis	-	1400.038.048.0								1400.050.048.0							
	Allowable Wire Space	-	Ø8 x2								Ø8 x3							

Note: 1. Measurement is performed on a granite table according to HIWIN MIKROSYSTEM's standard procedure. 2. Error compensation table is provided if HIWIN MIKROSYSTEM's drive is not included. 3. Max. velocity will be determined by stroke, payload, encoder resolution etc.