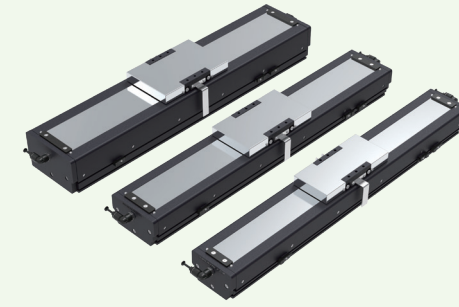


Features

- Suitable for clean room ISO Class 2 environments
- Smooth motion suitable for positioning and scanning applications*
- Standardized module for easy installation
- Long stroke support (Stroke up to 2.7 m)

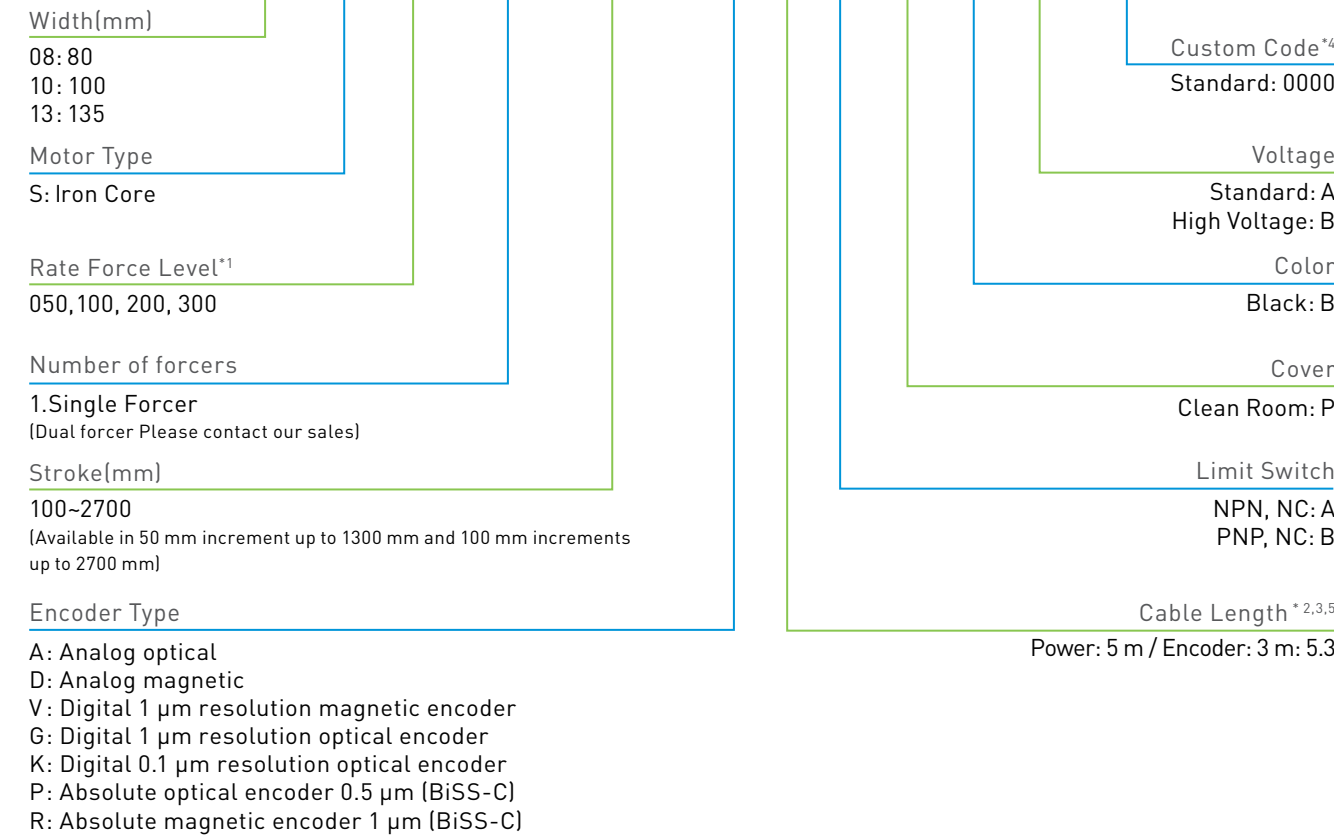


Note: With velocity ripple compensation function in E2 drive can ensure a velocity ripple <1%.



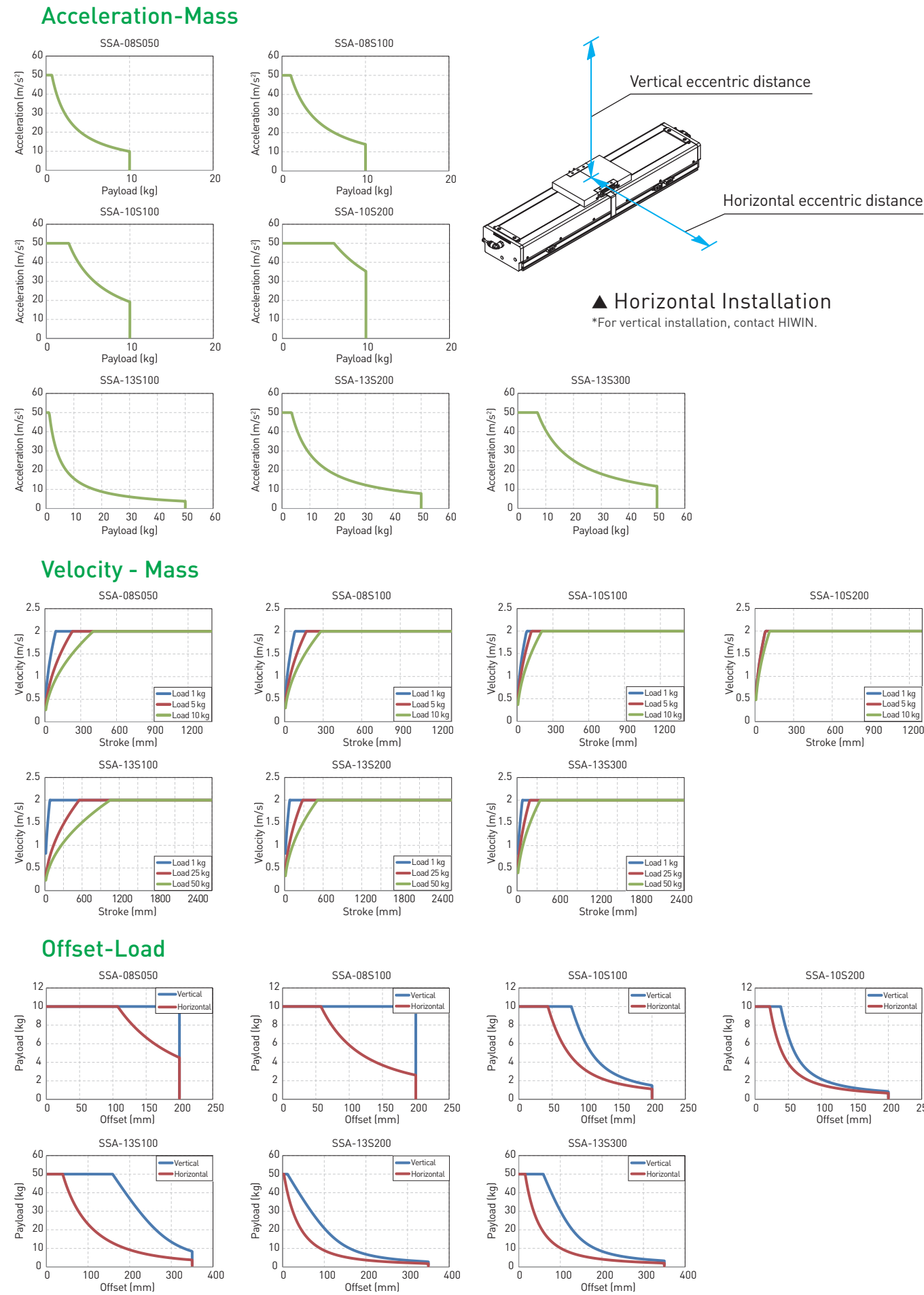
Model Number

LMSSA-08 S050-1-800-G53A-P-B-A0000

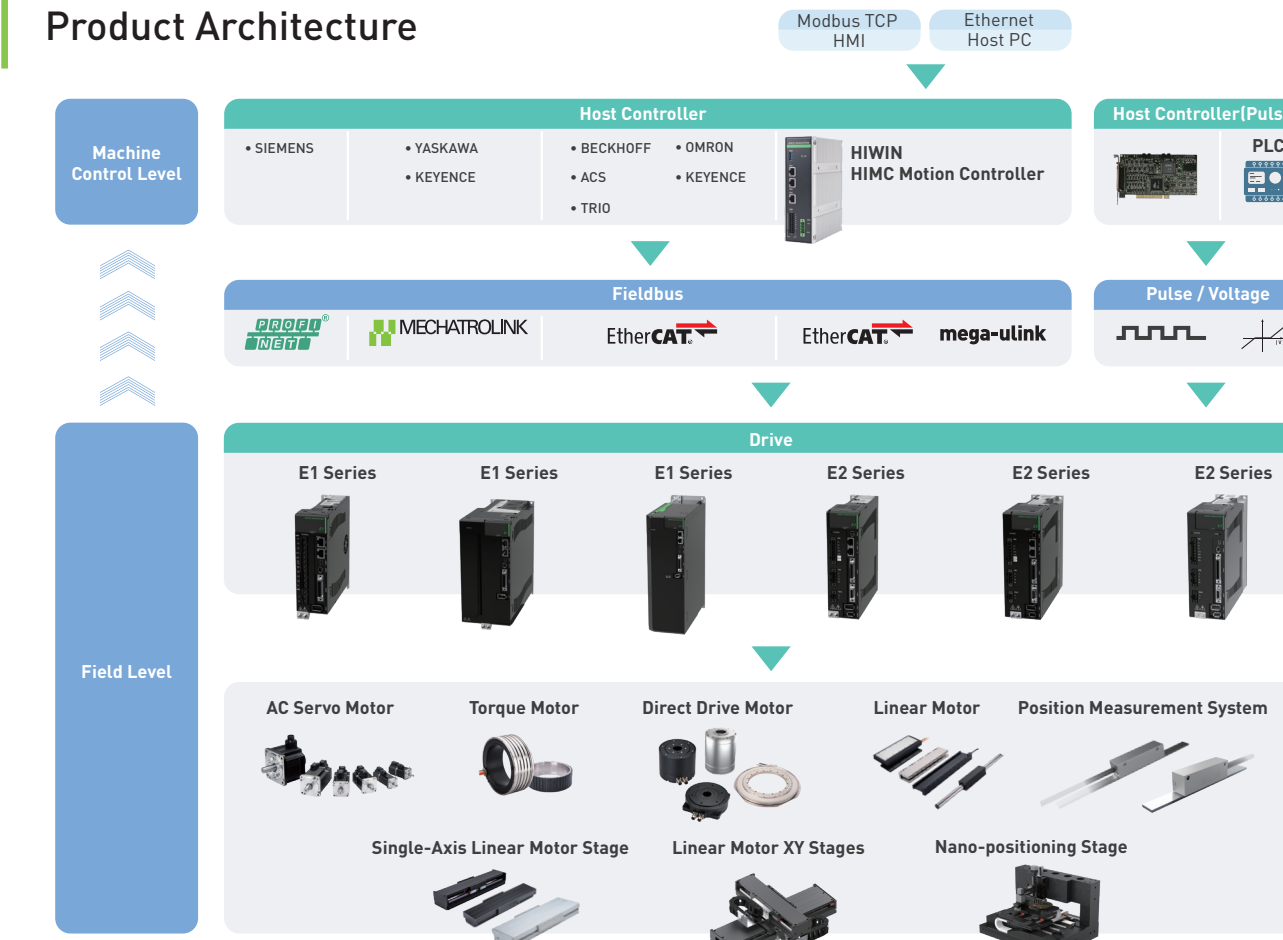


- Note: 1. Please refer Product Dimension and Specification.
 2. Encoder extension cable is sold separately.
 3. The length of cable is measured from the motor/encoder.
 The length from the forcer plate is 0.5 m shorter. For example, if the distance from the motor/encoder is 3 m, the distance from the forcer plate is 2.5 m.
 4. Customizable centralized oiling (I13 series).
 5. The standard length of power cable is 5 m, and the cable length can be customized in m unit.
 The standard length of encoder cable is 3 m, no customization.

Product Capability Charts (Horizontal Installation)



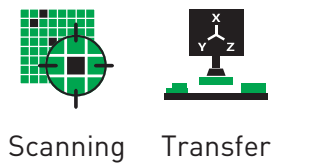
Product Architecture



Note: EtherCAT® is a registered trademark of Beckhoff Automation Co., Ltd./MECHATROLINK is a registered trademark of MECHATROLINK Members Association. PROFINET® is a registered trademark of PROFIBUS & PROFINET International (PI). Only E1 Series supports PROFINET and MECHATROLINK. SIEMENS, YASKAWA, KEYENCE, BECKHOFF, ACS, OMRON, TRIO are trademarks of the respective companies.

HIWIN® MIKROSYSTEM

Low Dust Design - ISO Class 2



HIWIN® MIKROSYSTEM

Global Sales And Customer Service Site

HIWIN MIKROSYSTEM CORP.
 No. 6, Jingke Central Rd.,
 Taichung Precision Machinery Park,
 Taichung 40852, Taiwan
 Tel: +886-4-2355-0110
 Fax: +886-4-2355-0123
 www.hiwinmikro.tw
 business@hiwinmikro.tw

HIWIN GmbH
 OFFENBURG, GERMANY
 www.hiwin.de
 www.hiwin.eu
 info@hiwin.de

HIWIN Schweiz GmbH
 JONA, SWITZERLAND
 www.hiwin.ch
 info@hiwin.ch

HIWIN KOREA
 SUWON - CHANGWON, KOREA
 www.hiwin.kr
 info@hiwin.kr

HIWIN JAPAN
 KOBE - NAGOYA - TOKYO - TOHOKU -
 NAGANO - SHIZUOKA - HOKURIKU -
 HIROSHIMA - FUKUOKA - KUMAMOTO,
 JAPAN
 www.hiwin.co.jp
 info@hiwin.co.jp

HIWIN s.r.o.
 BRNO, CZECH REPUBLIC
 www.hiwin.cz
 info@hiwin.cz

HIWIN CHINA
 SUZHOU, CHINA
 www.hiwin.cn
 info@hiwin.cn

HIWIN USA
 CHICAGO, U.S.A.
 www.hiwin.com
 info@hiwin.com

HIWIN FRANCE
 STRASBOURG, FRANCE
 www.hiwin.fr
 info@hiwin.de

Mega-Fabs Motion Systems, Ltd.
 HAIFA, ISRAEL
 www.mega-fabs.com
 info@mega-fabs.com

HIWIN Srl
 BRUGHERIO, ITALY
 www.hiwin.it
 info@hiwin.it

HIWIN SINGAPORE
 SINGAPORE
 www.hiwin.sg
 info@hiwin.sg

SSA Series

Single-Axis Linear Motor Stage
 Clean Room Type



Use SSA selection tool

