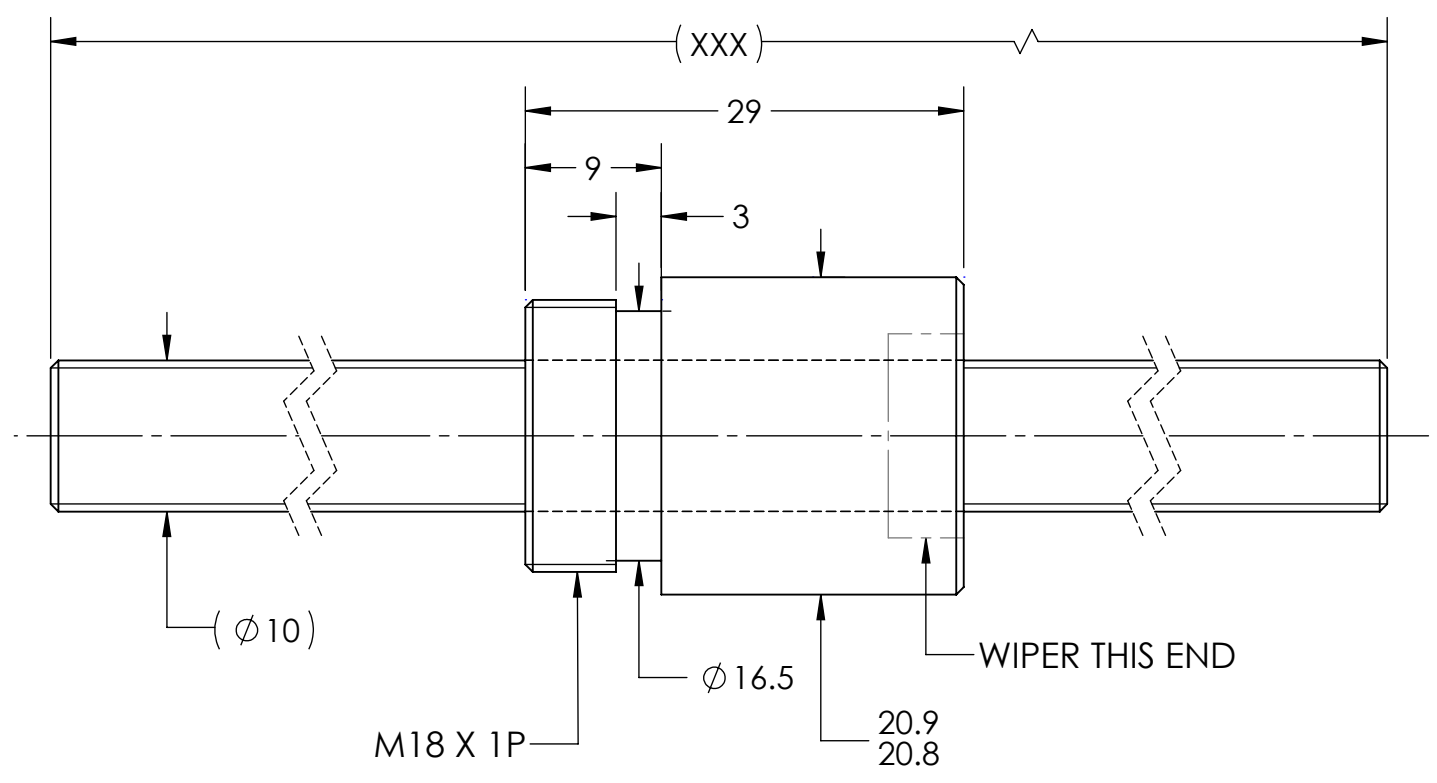
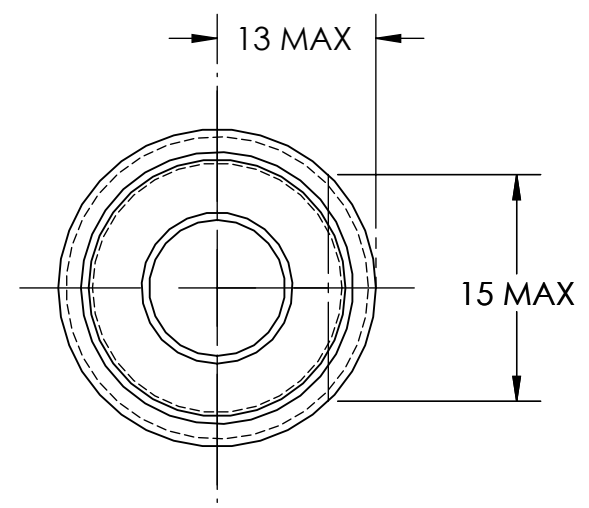


UNCONTROLLED IF PRINTED

$\sqrt{Ra6.3}$ ($\sqrt{Ra0.4}$)



M18 X 1P
 MD: 17.974
 17.794
 PD: 17.324
 17.206

BREAK SHARP EDGES UNLESS OTHERWISE SPECIFIED

PRELOAD(kgf)	~	ROUGH M/C	FIN M/C	GRD		MATERIAL	SHAFT:CF53/Equiv. NUT:SNM220/Equiv.					
R.D.	7.956	$\sqrt{Ra25}$	$\sqrt{Ra6.3}$	$\sqrt{Ra0.4}$		THREAD BALL TRACK	HRC 56~62					
S.F. (kgf)	~	TOLERANCE mm										
DRAG TRQ(kgf-cm)	~	UP	6	30	120	300	600	1200	2400	2400		
TURN DIRECTION	R	TO	6	30	120	300	600	1200	2400	OVER		
P.C. DIA.	10.02	± 0.1	± 0.2	± 0.3	± 0.4	± 0.5	± 0.8	± 1.0	± 1.5			
BALL DIA.	2	DATE	INITIALS	 HIWIN CORPORATION 12455 Jim Dhamer Dr, Huntley, IL 60142								
BACKLASH	0.02 MAX	DRAWN	04/27/2022								D.W	
CIRCUIT	1.6*1	CHECKED	01/17/2023								T.C.	
LEAD ANGLE	9.03	MFG APPR.	01/17/2023								A.H	
DYNAMIC (kgf)	230	TITLE:		STANDARD STOCK BALLSCREW								
STATIC (kgf)	390	PART NUMBER:		R10-5A1-RST-XXX-XXX-0.05								
LEAD	5	SIZE		B	DWG. NO.		W-SBS-10-5-A01		REV	N/C	SCALE	NTS
		v300p:										

HIWIN CONFIDENTIAL