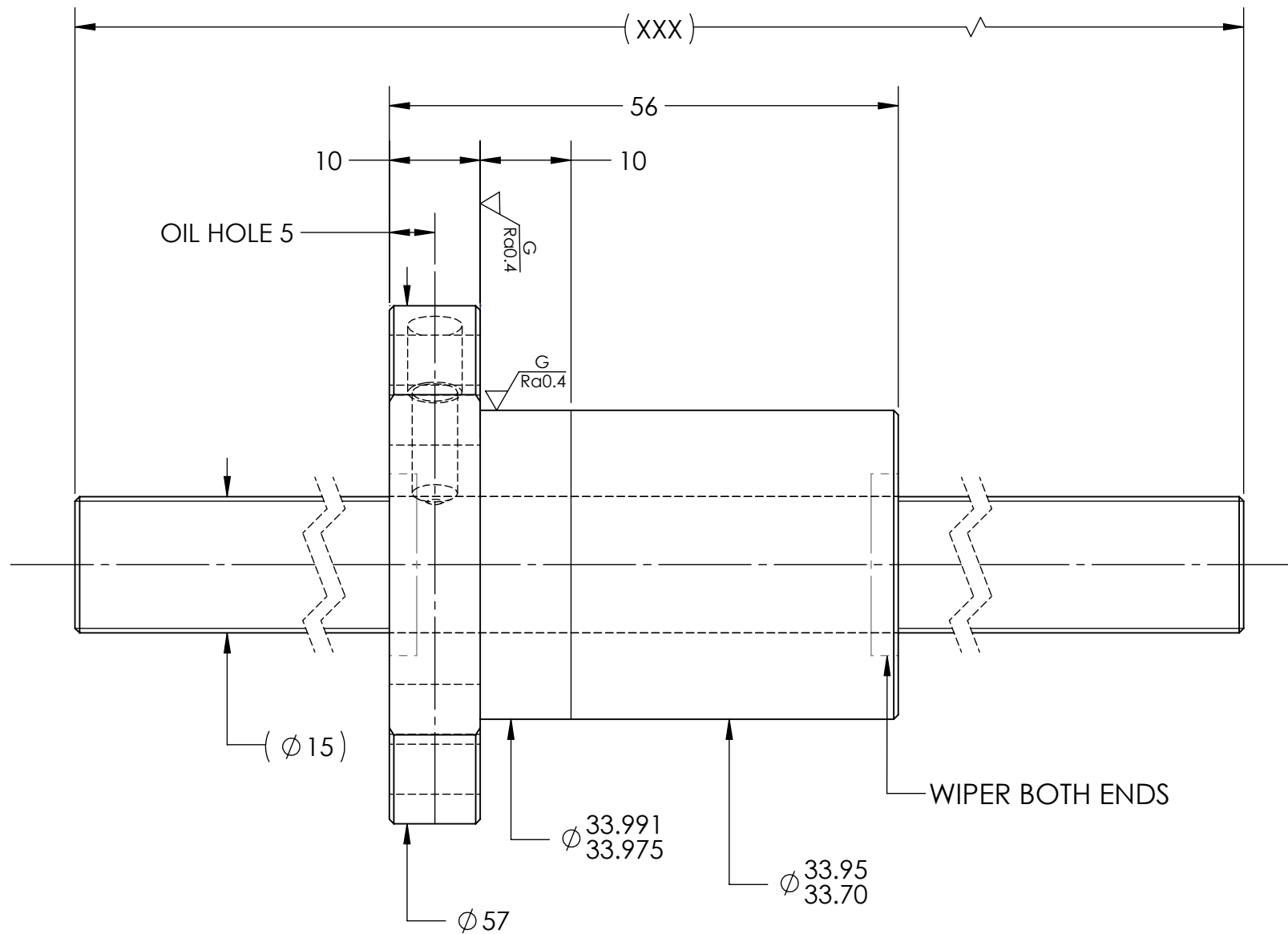
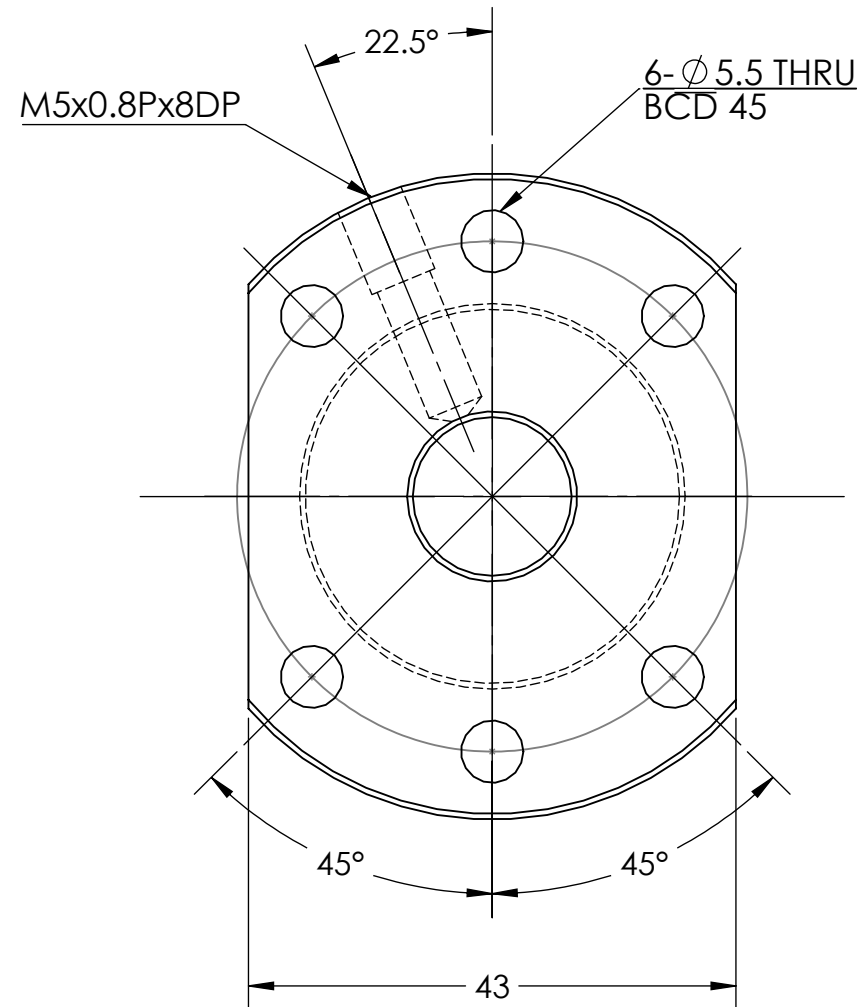


UNCONTROLLED IF PRINTED

$\sqrt{Ra6.3}$ ($\sqrt{Ra0.4}$)



BREAK SHARP EDGES UNLESS OTHERWISE SPECIFIED

PRELOAD(kgf)	~
R.D.	12.399
S.F. (kgf)	~
DRAG TRQ(kgf-cm)	~
TURN DIRECTION	R
P.C. DIA.	15.675
BALL DIA.	3.175
BACKLASH	0.04 MAX
CIRCUIT	4
LEAD ANGLE	22.1
DYNAMIC (kgf)	1040
STATIC (kgf)	2260
LEAD/PITCH	20/5

ROUGH M/C	FIN M/C	GRD	MATERIAL		SHAFT:CF53/Equiv. NUT:SNM220/Equiv.					
$\sqrt{Ra25}$	$\sqrt{Ra6.3}$	$\sqrt{Ra0.4}$	THREAD BALL TRACK		HRC 56~62					
TOLERANCE mm										
UP	6	30	120	300	600	1200	2400	2400		
TO	6	30	120	300	600	1200	2400	OVER		
	± 0.1	± 0.2	± 0.3	± 0.4	± 0.5	± 0.8	± 1.0	± 1.5		
DATE	INITIALS	HIWIN CORPORATION 12455 Jim Dhamer Dr, Huntley, IL 60142 Motion Control and System Technology								
DRAWN	09/30/2022									D.W
CHECKED	01/17/2023									T.C.
MFG APPR.	01/17/2023									A.H
TITLE:			STANDARD STOCK BALLSCREW							
PART NUMBER:			4R15-20K4-DFSC-XXX-XXX-0.05							
SIZE	DWG. NO.	REV	SCALE	NTS						
B	W-SBS-15-20-A01	N/C								

HIWIN CONFIDENTIAL