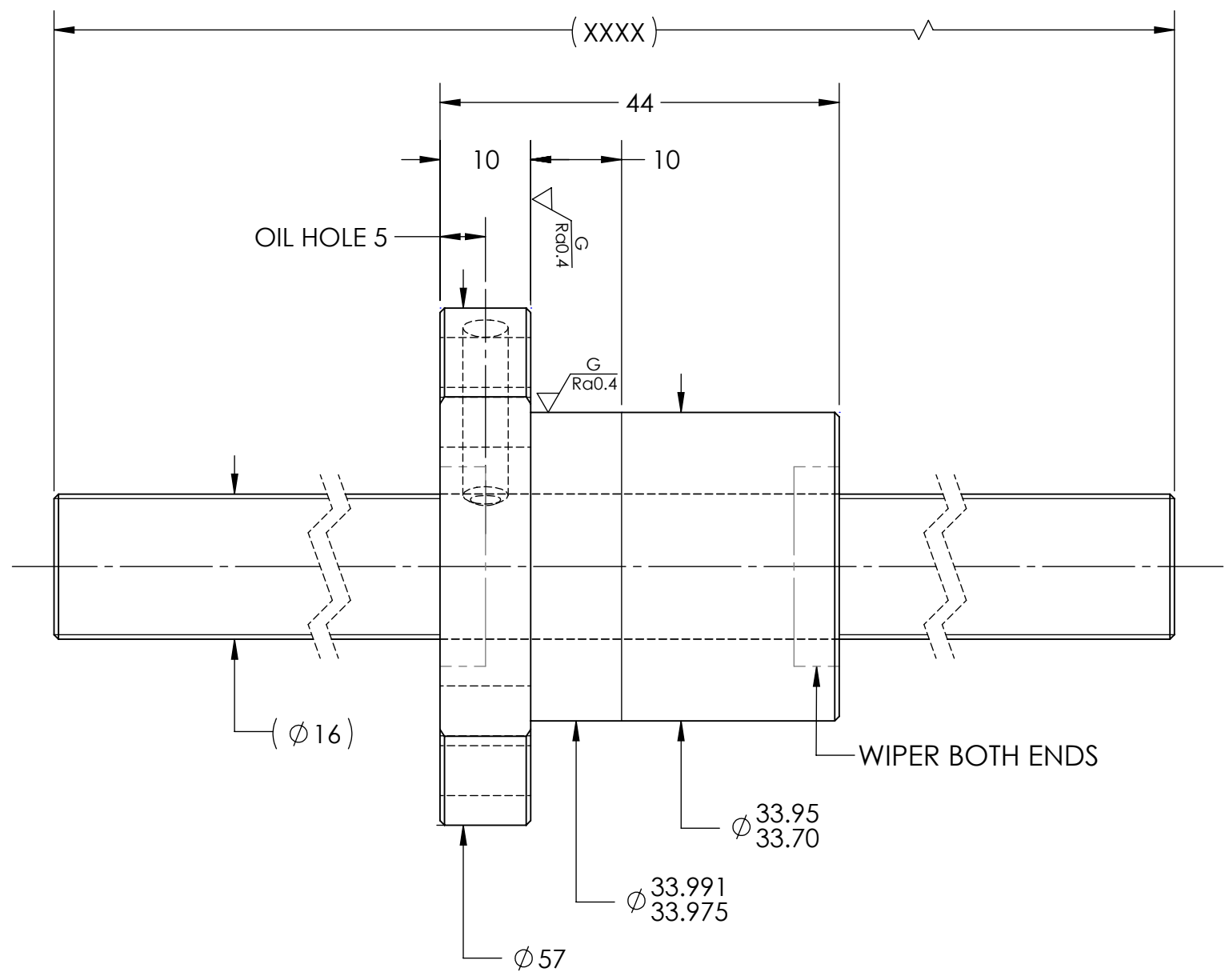
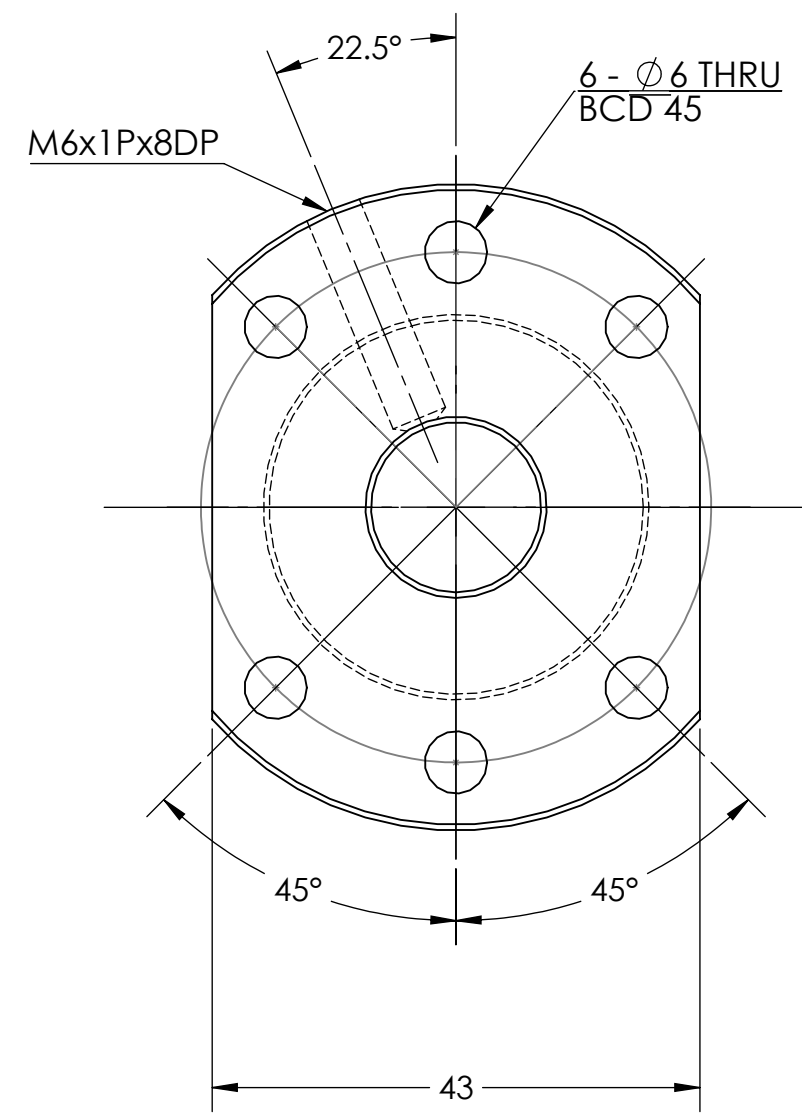


UNCONTROLLED IF PRINTED

$\sqrt{Ra6.3}$ ($\sqrt{Ra0.4}$)



| BREAK SHARP EDGES UNLESS OTHERWISE SPECIFIED | | | | | | | | | |
|--|----------|---------------------|----------------|-----------------|--|-------------------|--|-------|-----------|
| PRELOAD(kgf) | ~ | ROUGH M/C | FIN M/C | GRD | | MATERIAL | SHAFT:CF53/Equiv. NUT:SNM220/Equiv. | | |
| R.D. | 12.684 | $\sqrt{Ra25}$ | $\sqrt{Ra6.3}$ | $\sqrt{Ra0.4}$ | | THREAD BALL TRACK | HRC 56~62 | | |
| S.F. (kgf) | ~ | TOLERANCE mm | | | | | | | |
| DRAG TRQ(kgf-cm) | ~ | UP | 6 | 30 | 120 | 300 | 600 | 1200 | 2400 |
| TURN DIRECTION | R | TO | 6 | 30 | 120 | 300 | 600 | 1200 | 2400 OVER |
| P.C. DIA. | 15.96 | ± 0.1 | ± 0.2 | ± 0.3 | ± 0.4 | ± 0.5 | ± 0.8 | ± 1.0 | ± 1.5 |
| BALL DIA. | 3.175 | DATE | | INITIALS | HIWIN CORPORATION 12455 Jim Dhamer Dr, Huntley, IL 60142 | | | | |
| BACKLASH | 0.04 MAX | DRAWN | 11/14/2022 | D.W | | | | | |
| CIRCUIT | 3 | CHECKED | 01/17/2023 | T.C. | | | | | |
| LEAD ANGLE | 11.28 | MFG APPR. | 01/17/2023 | A.H | TITLE: STANDARD STOCK BALLSCREW | | | | |
| DYNAMIC (kgf) | 900 | THREAD LENGTH | | | PART NUMBER: R16-10K3-FSC-XXX-XXX-0.05 | | | | |
| STATIC (kgf) | 1860 | SIZE | DWG. NO. | REV | SCALE | NTS | | | |
| LEAD | 10 | v300p: | B | W-SBS-16-10-A01 | N/C | | | | |

HIWIN CONFIDENTIAL