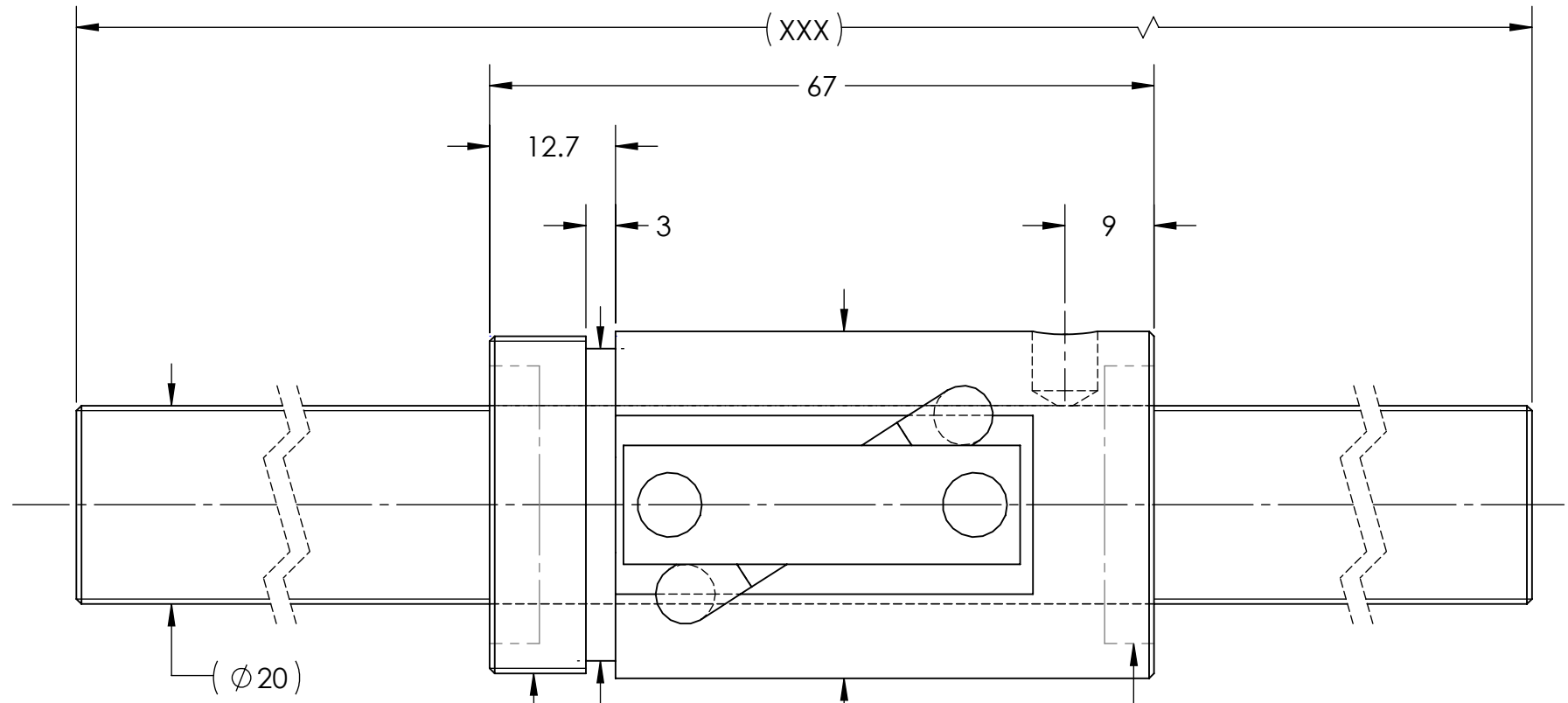
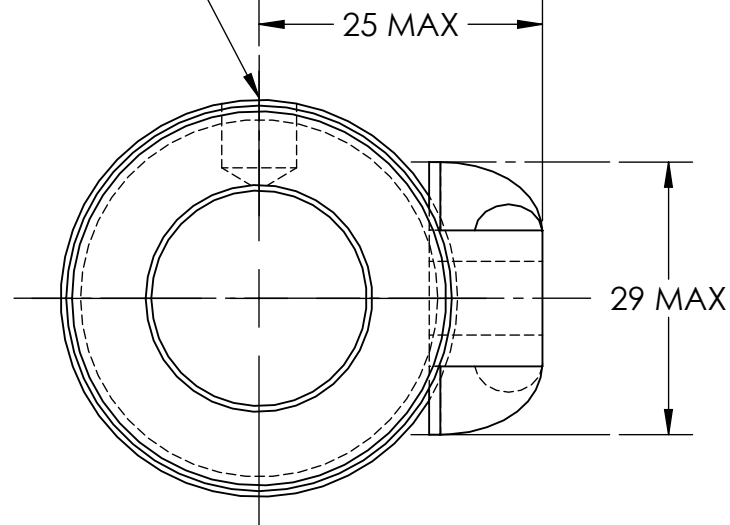


UNCONTROLLED IF PRINTED

$\sqrt{Ra6.3}$ ($\sqrt{Ra0.4}$)

M6x1Px6DP
(OIL HOLE) NOTE:1.



M34 X 1.5P
MD: 33.968
33.732
PD: 32.994
32.844

WIPER BOTH ENDS

BREAK SHARP EDGES UNLESS OTHERWISE SPECIFIED

PRELOAD(kgf)	~	ROUGH M/C	FIN M/C	GRD	MATERIAL		SHAFT:CF53/Equiv.			
R.D.	15.982	$\sqrt{Ra25}$	$\sqrt{Ra6.3}$	$\sqrt{Ra0.4}$	NUT:SNM220/Equiv.		THREAD BALL TRACK HRC 56~62			
S.F. (kgf)	~	TOLERANCE mm								
DRAG TRQ(kgf-cm)	~	UP	6	30	120	300	600	1200	2400	2400
TURN DIRECTION	R	TO	6	30	120	300	600	1200	2400	OVER
P.C. DIA.	20.85	± 0.1	± 0.2	± 0.3	± 0.4	± 0.5	± 0.8	± 1.0	± 1.5	
BALL DIA.	4.763	DATE		INITIALS	HIWIN HIWIN CORPORATION Motion Control and System Technology 12455 Jim Dhamer Dr, Huntley, IL 60142					
BACKLASH	0.03 MAX	DRAWN	07/07/2022	D.W						
CIRCUIT	2.5*1	CHECKED	01/18/2023	T.C.						
LEAD ANGLE	8.68	MFG APPR.	01/18/2023	A.H	TITLE: STANDARD STOCK BALLSCREW					
DYNAMIC (kgf)	1280	THREAD LENGTH		PART NUMBER: R20-10B1-RSV-XXX-XXX-0.05						
STATIC (kgf)	2314	v300p:		SIZE		DWG. NO.		REV	SCALE	NTS
LEAD	10	+0		B		W-SBS-20-10-A01		N/C		

HIWIN CONFIDENTIAL