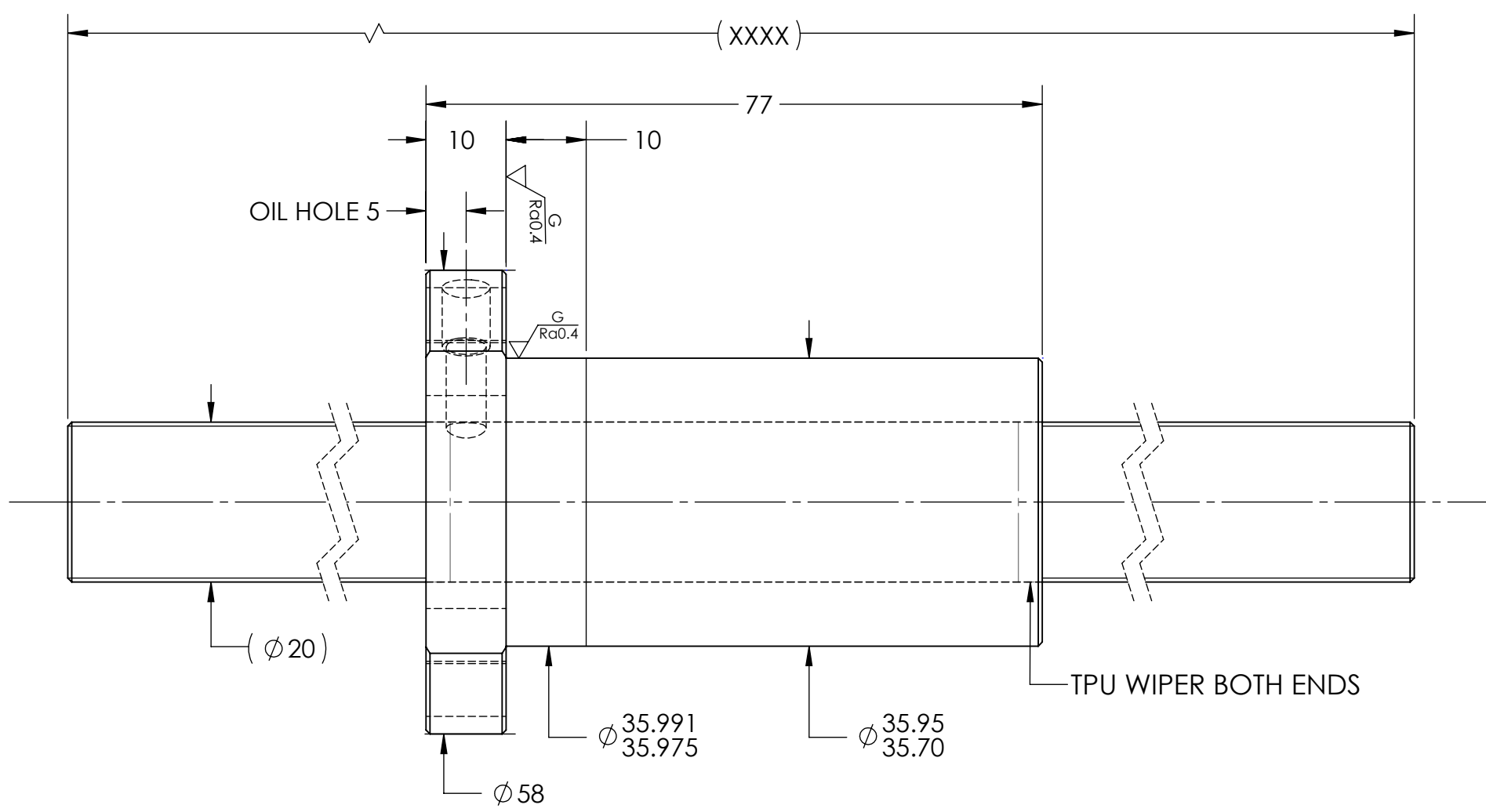
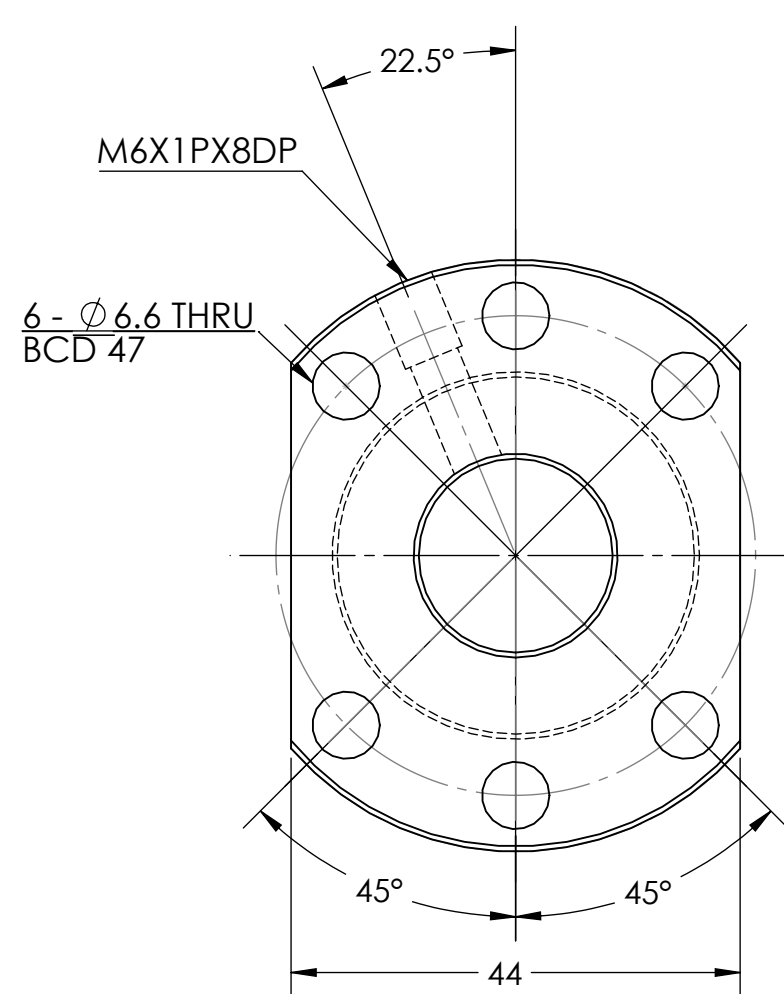


UNCONTROLLED IF PRINTED

Ra6.3 (Ra0.4)

D
C
B
A

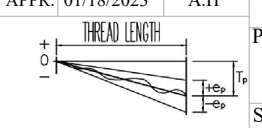
D
C
B
A



BREAK SHARP EDGES UNLESS OTHERWISE SPECIFIED

PRELOAD(kgf)	~
R.D.	17.084
S.F. (kgf)	~
DRAG TRQ(kgf-cm)	~
TURN DIRECTION	R
P.C. DIA.	20.36
BALL DIA.	3.175
BACKLASH	0.04 MAX
CIRCUIT	3
LEAD ANGLE	17.36
DYNAMIC (kgf)	1250
STATIC (kgf)	2420
LEAD/PITCH	20/5

ROUGH M/C	FIN M/C	GRD	TOLERANCE mm		MATERIAL	SHAFT:CF53/Equiv. NUT:SNCM220/Equiv.
$\sqrt{Ra25}$	$\sqrt{Ra6.3}$	$\sqrt{Ra0.4}$	UP	TO	THREAD BALL TRACK	HRC 56-62
			6	30		
			30	120		
			120	300		
			300	600		
			600	1200		
			1200	2400		
			2400	OVER		
			± 0.1	± 0.2		
			± 0.3	± 0.4		
			± 0.5	± 0.8		
			± 1.0	± 1.5		
DATE	INITIALS	HIWIN CORPORATION				
09/30/2022	D.W	12455 Jim Dhamer Dr, Huntley, IL 60142				
CHECKED	T.C.	TITLE:				
01/18/2023	A.H	STANDARD STOCK BALLSCREW				
MFG APPR.		PART NUMBER:				
01/18/2023		4R20-20K3-FSCEW-XXXX-XXXX-0.05				
		SIZE	DWG. NO.	REV	SCALE	NTS
		B	W-SBS-20-20-A01	N/C		



HIWIN CONFIDENTIAL

8 7 6 5 4 3 2 1