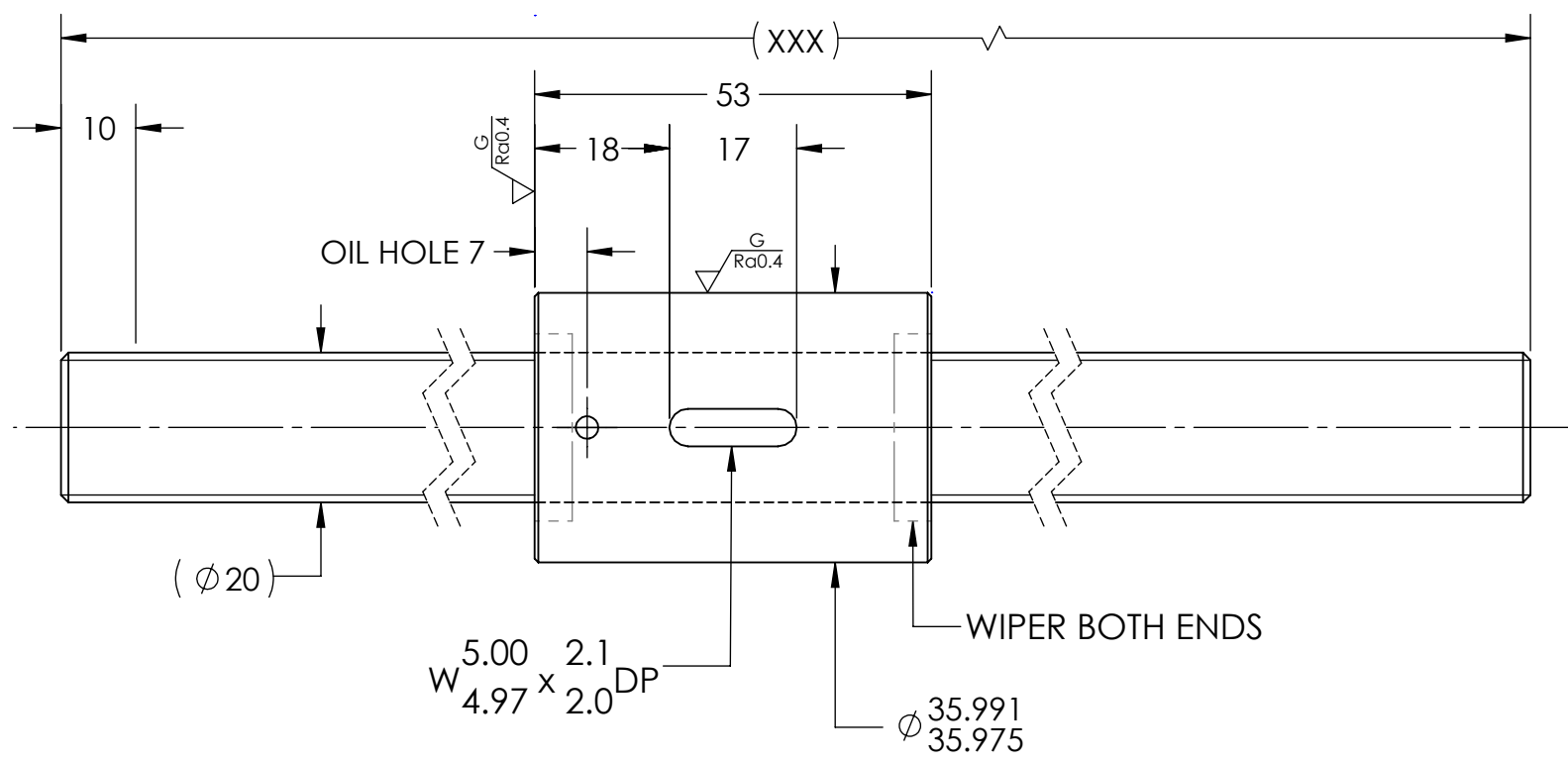
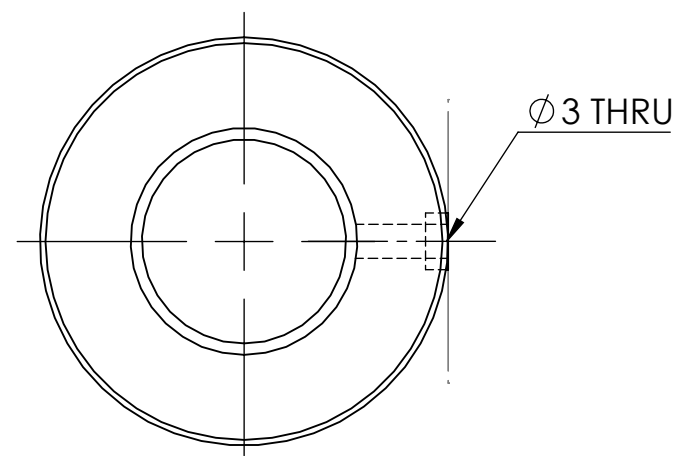


UNCONTROLLED IF PRINTED

Ra6.3 (G Ra0.4)



BREAK SHARP EDGES UNLESS OTHERWISE SPECIFIED

PRELOAD(kgf)	47
R.D.	16.924
S.F. (kgf)	0.08~0.67
DRAG TRQ(kgf-cm)	0.13~1.21
TURN DIRECTION	R
P.C. DIA.	20.2
BALL DIA.	3.175
BACKLASH	0
CIRCUIT	4
LEAD ANGLE	4.51
DYNAMIC (kgf)	938
STATIC (kgf)	1993
LEAD	5

ROUGH M/C	FIN M/C	GRD	MATERIAL		SHAFT:CF53/Equiv. NUT:SNM220/Equiv.				
√Ra25	√Ra6.3	√Ra0.4	THREAD BALL TRACK		HRC 56~62				
TOLERANCE mm									
UP	6	30	120	300	600	1200	2400	2400	OVER
TO	6	30	120	300	600	1200	2400	2400	OVER
	± 0.1	± 0.2	± 0.3	± 0.4	± 0.5	± 0.8	± 1.0	± 1.5	
DATE	INITIALS	HIWIN CORPORATION 12455 Jim Dhamer Dr, Huntley, IL 60142 TITLE: STANDARD STOCK BALLSCREW PART NUMBER: R20-5T4-RSI-XXX-XXX-0.023							
DRAWN	D.W								
CHECKED	T.C.								
MFG APPR.	A.H								
THREAD LENGTH									
SIZE	DWG. NO.	REV	SCALE	NTS					
B	W-SBS-20-5-A02	N/C							

HIWIN CONFIDENTIAL