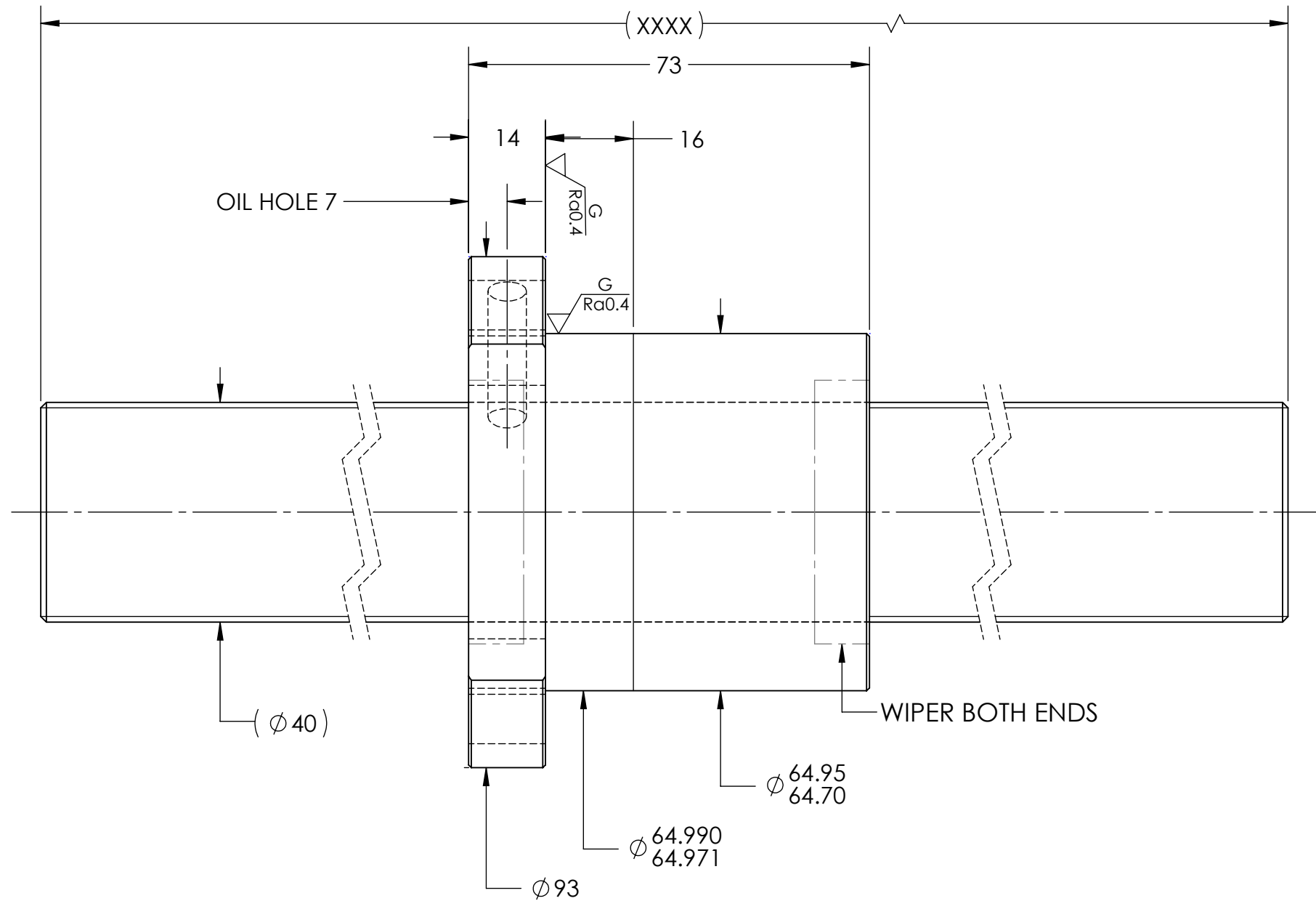
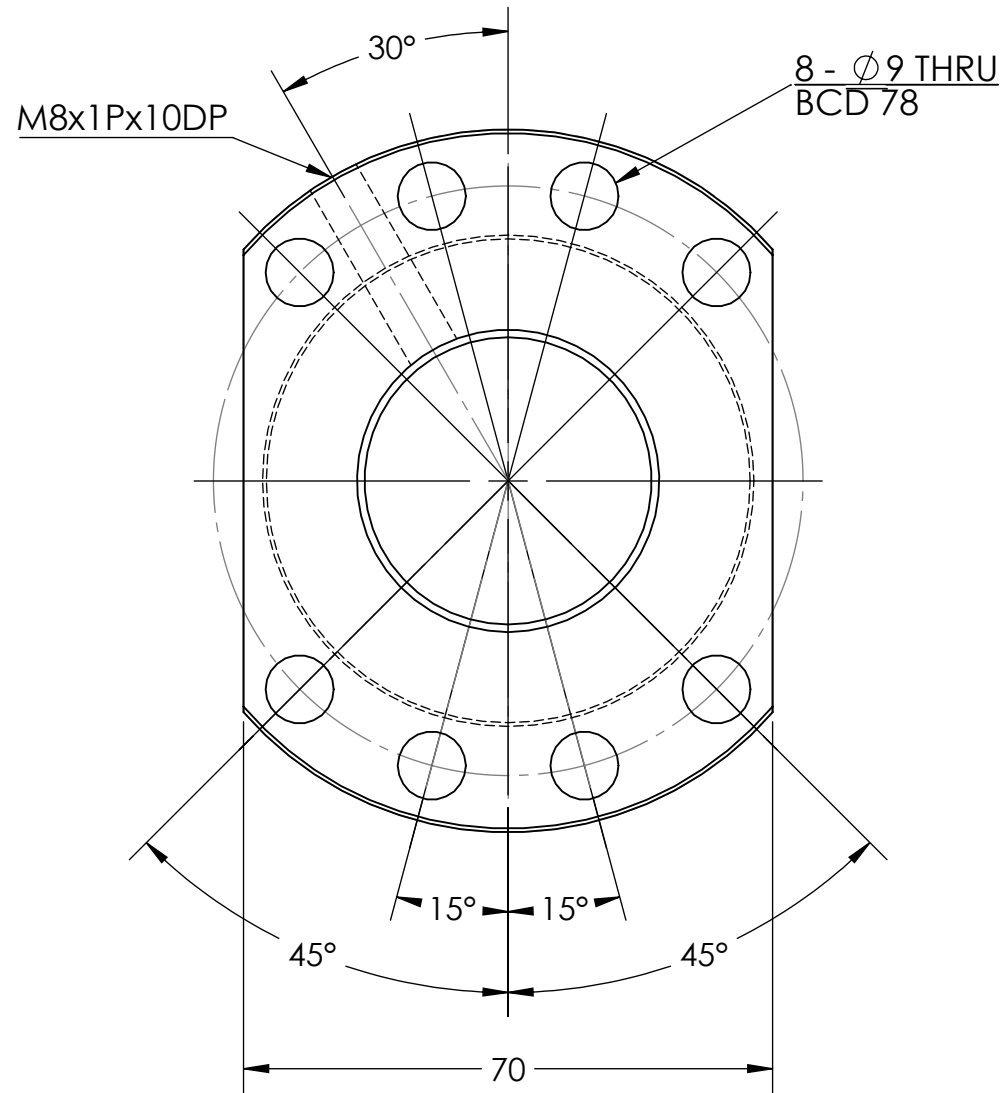


UNCONTROLLED IF PRINTED

$\sqrt{Ra6.3}$ ($\sqrt{Ra0.4}$)

D
C
B
A



D
C
B
A

BREAK SHARP EDGES UNLESS OTHERWISE SPECIFIED

PRELOAD(kgf)	~
R.D.	35.36
S.F. (kgf)	~
DRAG TRQ(kgf-cm)	~
TURN DIRECTION	R
P.C. DIA.	41.85
BALL DIA.	6.35
BACKLASH	0.07 MAX
CIRCUIT	4
LEAD ANGLE	4.35
DYNAMIC (kgf)	4660
STATIC (kgf)	13120
LEAD	10

ROUGH M/C	FIN M/C	GRD	MATERIAL		SHAFT:CF53/Equiv.	
$\sqrt{Ra25}$	$\sqrt{Ra6.3}$	$\sqrt{Ra0.4}$	THREAD BALL TRACK		NUT:SNM220/Equiv.	
TOLERANCE mm						
UP	6	30	120	300	600	1200
TO	6	30	120	300	600	1200
TURN DIRECTION	± 0.1	± 0.2	± 0.3	± 0.4	± 0.5	± 0.8
						± 1.0
						± 1.5
DATE	INITIALS	HIWIN CORPORATION				
11/15/2022	D.W	12455 Jim Dhamer Dr, Huntley, IL 60142				
CHECKED	T.C.	TITLE:				
01/18/2023	A.H	STANDARD STOCK BALLSCREW				
MFG APPR.		PART NUMBER:				
01/18/2023		R40-10K4-FSC-XXXX-XXXX-0.05				
DATE	SCALE	REV	NTS			
01/18/2023	N/C					

HIWIN CONFIDENTIAL

8 7 6 5 4 3 2 1