

UNCONTROLLED IF PRINTED

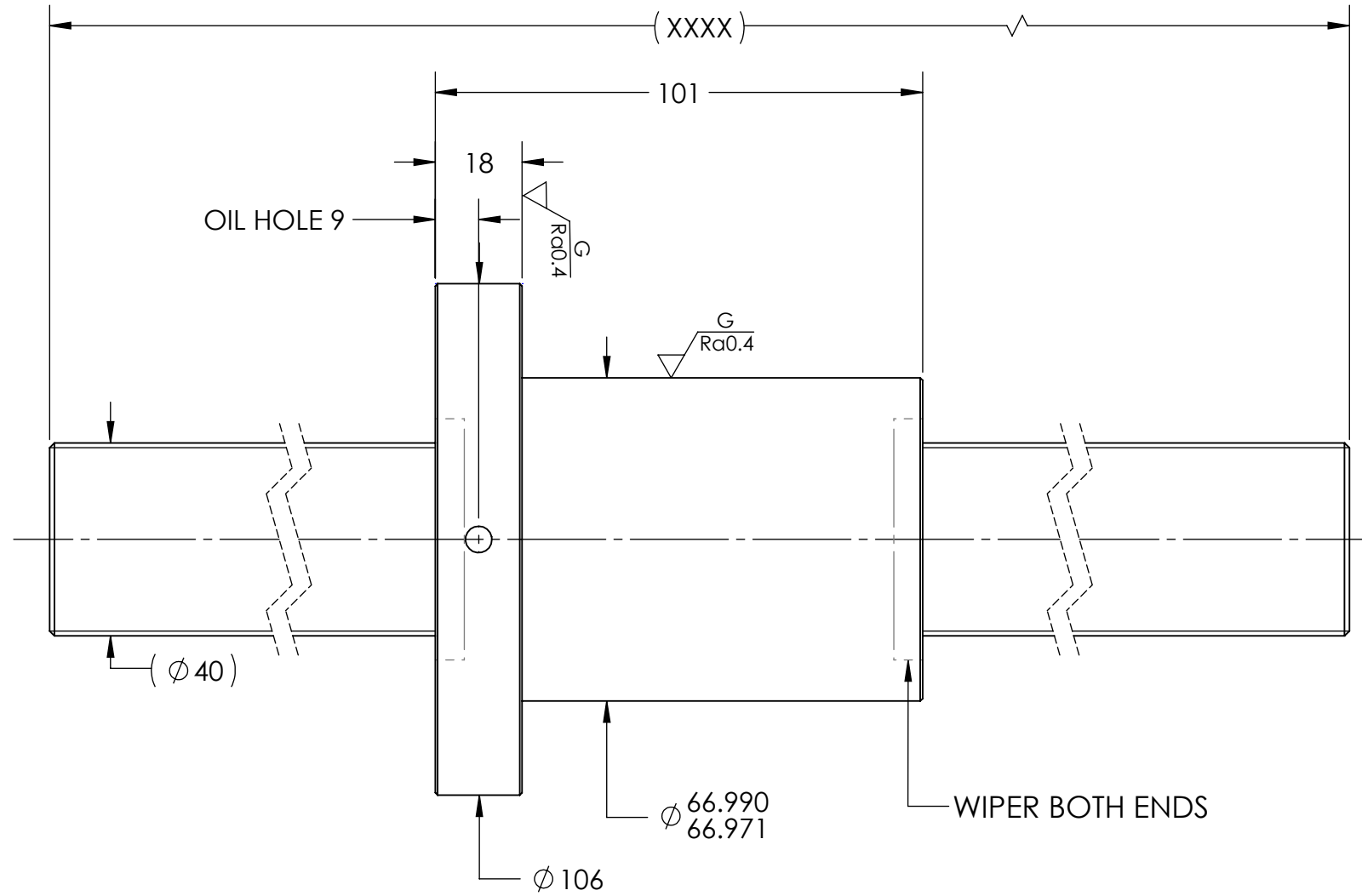
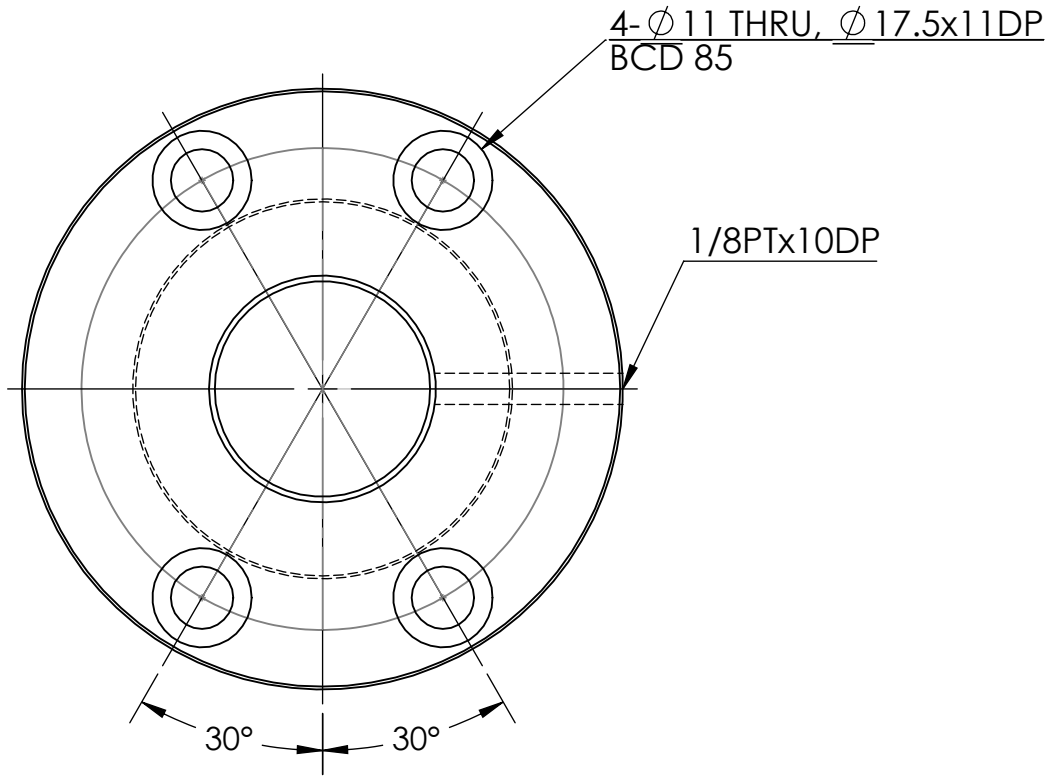
$\sqrt{Ra6.3}$  ( $\sqrt{Ra0.4}^G$ )

D

C

B

A



D

C

B

A

HIWIN CONFIDENTIAL

**BREAK SHARP EDGES UNLESS OTHERWISE SPECIFIED**

PRELOAD(kgf)	~
R.D.	35.41
S.F. (kgf)	~
DRAG TRQ(kgf-cm)	~
TURN DIRECTION	R
P.C. DIA.	41.9
BALL DIA.	6.35
BACKLASH	0.07 MAX
CIRCUIT	4
LEAD ANGLE	16.9
DYNAMIC (kgf)	4350
STATIC (kgf)	12530
LEAD/PITCH	40/10

ROUGH M/C	FIN M/C	GRD	MATERIAL		SHAFT:CF53/Equiv. NUT:SNM220/Equiv.
$\sqrt{Ra25}$	$\sqrt{Ra6.3}$	$\sqrt{Ra0.4}$	THREAD BALL TRACK		HRC 56-62
<b>TOLERANCE mm</b>					
UP	6	30	120	300	600
TO	6	30	120	300	600
			1200	2400	OVER
	± 0.1	± 0.2	± 0.3	± 0.4	± 0.5
			± 0.8	± 1.0	± 1.5
DATE	INITIALS	HIWIN CORPORATION			
07/14/2022	D.W	12455 Jim Dhamer Dr, Huntley, IL 60142			
CHECKED	T.C.	TITLE:			
01/18/2023	A.H	STANDARD STOCK BALLSCREW			
MFG APPR.		PART NUMBER:			
01/18/2023		4R40-40K4-DFSC-XXXX-XXXX-0.05			
v300p:		SIZE	DWG. NO.	REV	SCALE
		B	W-SBS-40-40-A01	N/C	NTS

