

UNCONTROLLED IF PRINTED

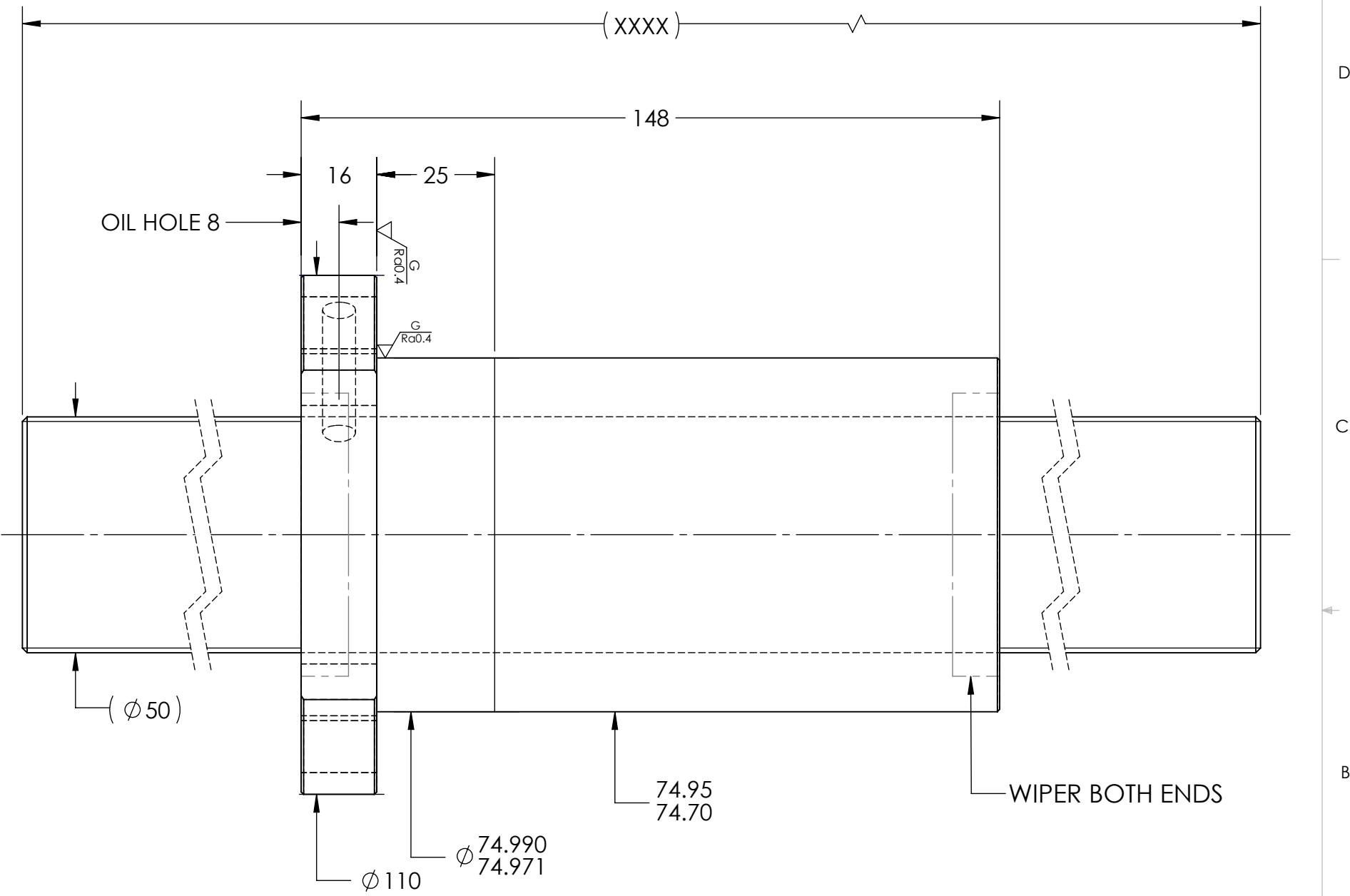
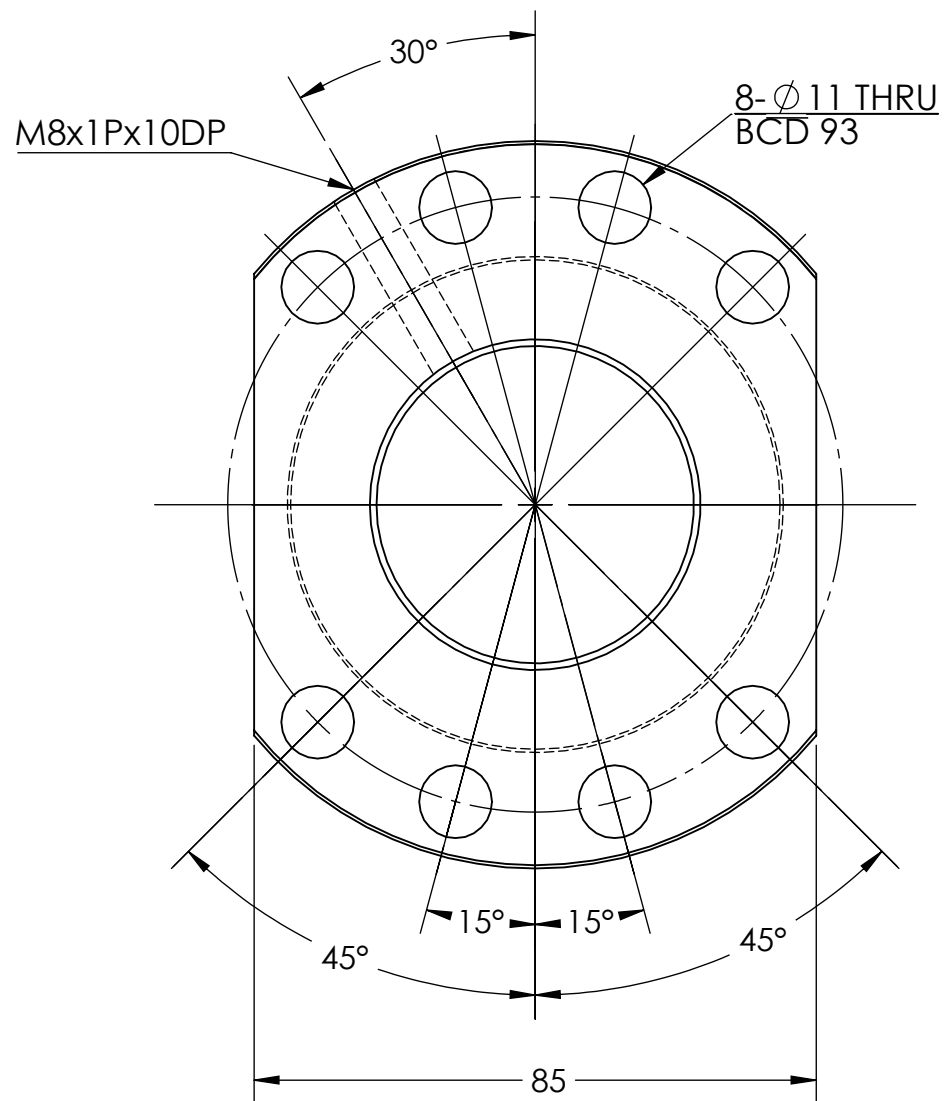
Ra6.3
G
Ra0.4

D

C

B

A



D

C

B

A

HIWIN CONFIDENTIAL

BREAK SHARP EDGES UNLESS OTHERWISE SPECIFIED

PRELOAD(kgf)	~	ROUGH M/C	FIN M/C	GRD		MATERIAL	SHAFT:CF53/Equiv. NUT:SNM220/Equiv.				
R.D.	45.46	$\sqrt{Ra25}$	$\sqrt{Ra6.3}$	$\sqrt{Ra0.4}$		THREAD BALL TRACK	HRC 56~62				
S.F. (kgf)	~	TOLERANCE mm									
DRAG TRQ(kgf-cm)	~	UP	6	30	120	300	600	1200	2400	2400	OVER
TURN DIRECTION	R	TO	6	30	120	300	600	1200	2400	2400	OVER
P.C. DIA.	51.95	± 0.1	± 0.2	± 0.3	± 0.4	± 0.5	± 0.8	± 1.0	± 1.5		
BALL DIA.	6.35	DATE		INITIALS	 HIWIN CORPORATION 12455 Jim Dhamer Dr, Huntley, IL 60142 TITLE: STANDARD STOCK BALLSCREW PART NUMBER: 2R50-20K6-FSC-XXXX-XXXX-0.05						
BACKLASH	0.07 MAX	DRAWN	09/30/2022	D.W							
CIRCUIT	6	CHECKED	01/18/2023	T.C.							
LEAD ANGLE	6.99	MFG APPR.	01/18/2023	A.H							
DYNAMIC (kgf)	7390	THREAD LENGTH			SIZE	DWG. NO.	REV	SCALE	NTS		
STATIC (kgf)	25210	v300p:			B	W-SBS-50-20-A01	N/C				
LEAD/PITCH	20/10										

8

7

6

5

4

3

2

1