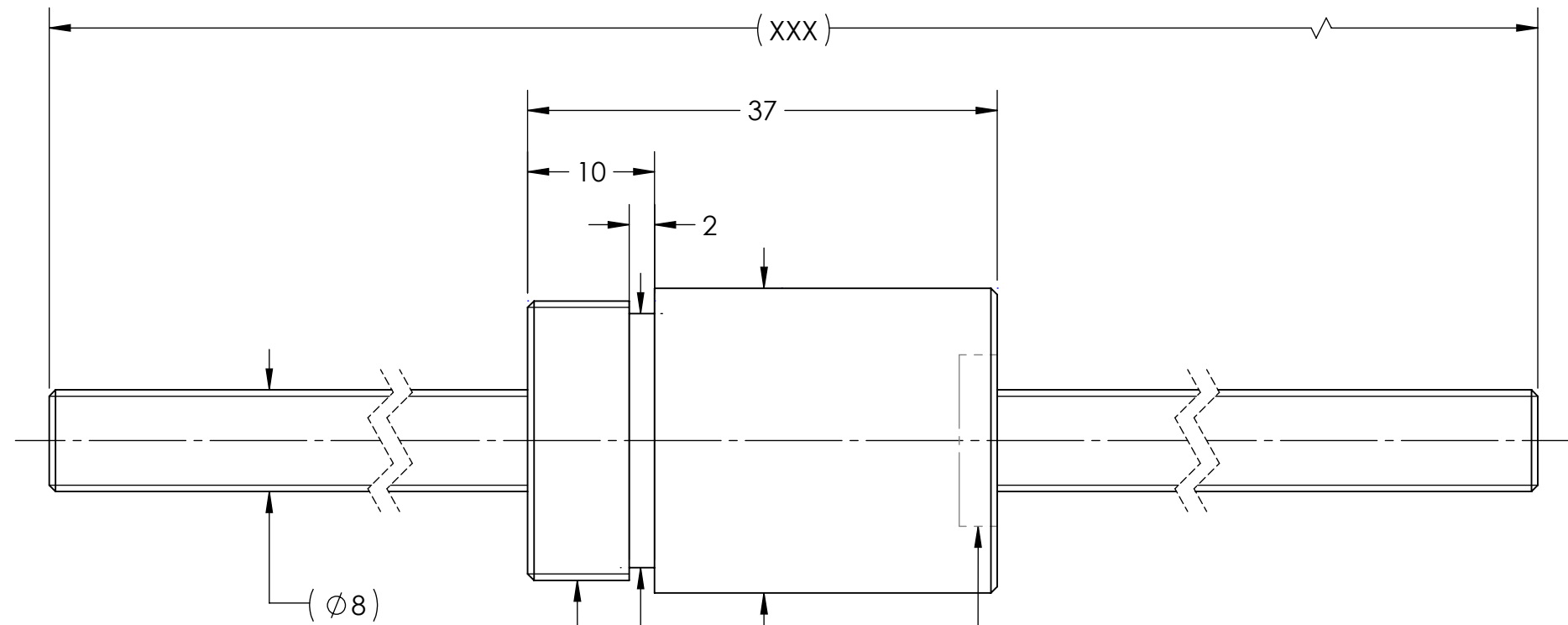
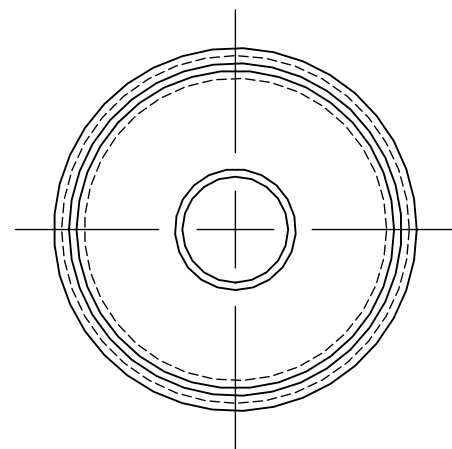


UNCONTROLLED IF PRINTED

Ra6.3 (G/Ra6.3)



M22 X 1P
 MD: 21.974
 21.794
 PD: 21.324
 21.206

BREAK SHARP EDGES UNLESS OTHERWISE SPECIFIED

PRELOAD(kgf)	~	ROUGH M/C	FIN M/C	GRD	MATERIAL		SHAFT:CF53/Equiv. NUT:SNM220/Equiv.			
R.D.	6.156	$\sqrt{Ra25}$	$\sqrt{Ra6.3}$	$\sqrt{Ra0.4}$	THREAT BALL TRACK		HRC 56~62			
S.F. (kgf)	~	TOLERANCE mm								
DRAG TRQ(kgf-cm)	~	UP	6	30	120	300	600	1200	2400	2400
TURN DIRECTION	R	TO	6	30	120	300	600	1200	2400	OVER
P.C. DIA.	8.22	DATE		INITIALS	HIWIN CORPORATION 12455 Jim Dhamer Dr, Huntley, IL 60142					
BALL DIA.	2	DRAWN	04/27/2022	D.W						
BACKLASH	0.02 MAX	CHECKED	01/17/2023	T.C.						
CIRCUIT	2.6*1	MFG APPR.	01/17/2023	A.H						
LEAD ANGLE	10.96	THREAD LENGTH		TITLE: STANDARD STOCK BALLSCREW PART NUMBER: R8-5B1-RST-XXX-XXX-0.05						
DYNAMIC (kgf)	320									
STATIC (kgf)	540	v300p: 0.05		SIZE	DWG. NO.	REV	SCALE	NTS		
LEAD	5			B	W-SBS-8-5-A02	N/C				

HIWIN CONFIDENTIAL