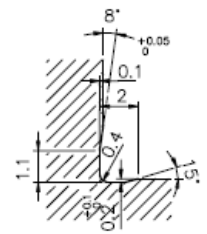
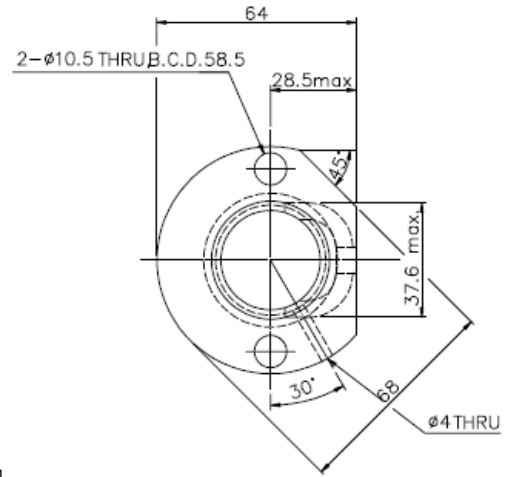


1/2"-20UNF
MD. 12.667
PD. 12.461
11.841
11.732

1/2"-20UNF
MD. 12.667
PD. 12.461
11.841
11.732



F0.4X0.2DIN509
X DETAIL

*BREAK SHARP EDGE UNLESS OTHER SPECIFIED.
*未量削均各去毛边

PRELOAD (kgf)	11.3
R.D	29.124
S.F (kgf)	0.04~1.36
DRAG TORQUE (kgf-cm)	0.1~4
LUBRICATION	OIL
DIRECTION OF TURN	R.H
PC DIA.	32.4
BALL DIA.	3.175
BALL TRACK FORM	GOETHIC
BACKLASH	0
CIRCUIT	2.5x2
LEAD ANGLE	2.86°
DYNAMIC (kgf)	168B
STATIC (kgf)	513B
LEAD	5.08

SPECR32-5.08B2-FSV-1017.8-1473.2-0.05



E3000.05

03.23.98	CHANGE FRAME	
1	8.24.95	1st ISSUE
REVISION	DATE	MODIFICATION

* PLEASE IGNORE CHINESE CHARACTER WHICH ARE FOR OUR REFERENCE ONLY.

CUSTOMER DRAWING NO.	
MC TYPE	4B
GEN. TYPE	X

UNCHAMFERED USE	<input type="checkbox"/> CO.5	<input checked="" type="checkbox"/> C1	<input type="checkbox"/> C	CUSTOMER	HIWIN STD.	DATE	03.23.98
ROUNDED USE	<input type="checkbox"/> 6.3c	<input type="checkbox"/> 1.5c	<input type="checkbox"/> 0.4c	SCALE	DWG		JENNY
TO #	NO	UNTOL.	DIMIN	TITLE	BALL SCREW	CHK	
1	120	300	600	MATERIAL	CF53	HEAT TREAT	
±0.1	±0.2	±0.3	±0.4	DWG. NO.	A106.3VA1	PROCESS NO.	E

HIWIN BALLSCREWS