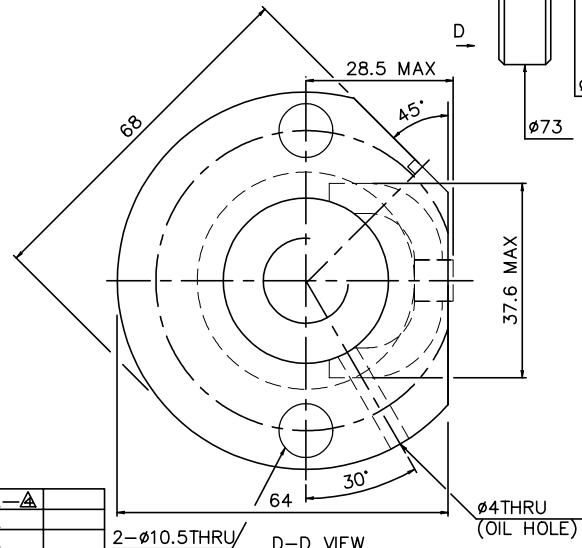
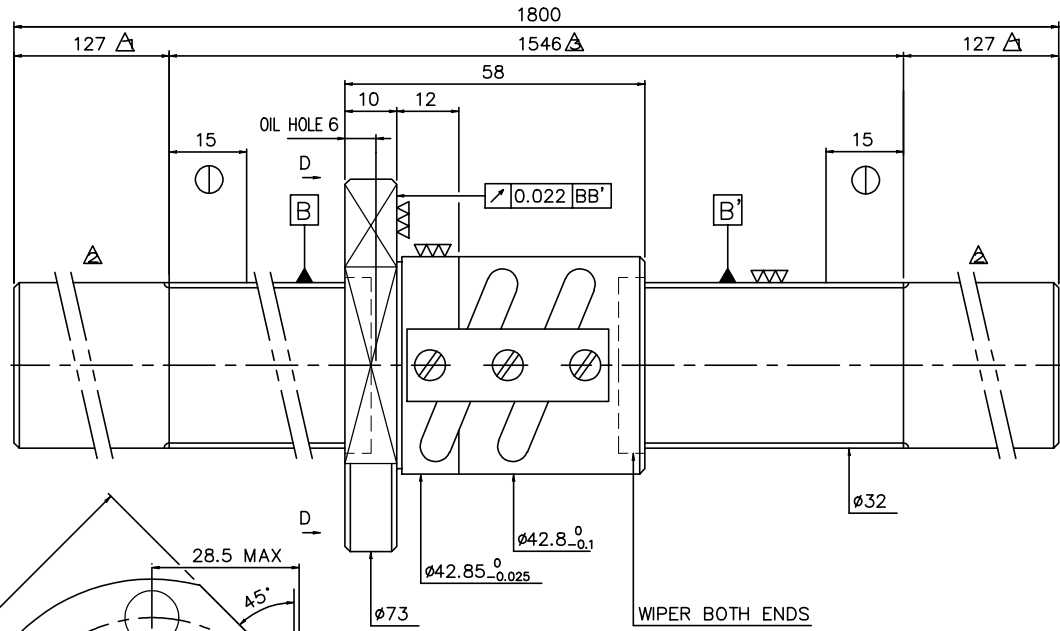


1 2 3 4 5 6 7 8 9

A
B
C
D
E
F
G



SPEC: R32-5.08B2-FSV-1546-1800-0.012

CUSTOMER DRAWING NO.	
MC TYPE	
ANAL TYPE	X

UNCHAMFERED USE	<input type="checkbox"/> C0.5	<input checked="" type="checkbox"/> C1	<input type="checkbox"/> C
ROUGH W/GRIND	<input type="checkbox"/> G	<input type="checkbox"/> GRD	<input type="checkbox"/> SCALE
UNIT	DIMN mm		
UP	130	120	100
TO	30	120	300
Ø	6.35	0.40	0.75
±	±0.1	±0.2	±0.3
±	±0.3	±0.4	±0.5
±	±0.8	±1.0	±1.5
OVER	1200	2400	2400
MATERIAL	SHT: 50CrMo4		
INT:	SINCM220		
DWG NO.	A108QVA1		
THREAD BALL TRACK	HRC 58 ~ 62		
THREAD END	ALLOW ABOVE LENGTH OUT OF HARDNESS TOLERANCE		

*BREAK SHARP EDGE UNLESS OTHER SPECIFIED
*未畫倒角者去毛邊

PRELOAD(kgf)	151
R.D	29.324
S.F (kgf)	0.37-1.50
DRAG TORQUE(Ng-cm)	1.09-4.38
LUBRICATION	OIL
DIRECTION OF TURN	R.H
PC DIA.	32.6
BALL DIA.	ø3.175
BALL TRACK FORM	GOTHIC
BACKLASH	0
CIRCUIT	2.5*2
LEAD ANGLE	2.84°
DYNAMIC (kgf)	1886
STATIC (kgf)	5666
LEAD	5.08

REVISION	DATE	MODIFICATION	APPROVED
-	02.18.98	MODIFY A-A	
-	02.13.98	MODIFY A	
-	02.12.98	MODIFY A	
1	02.11.98	A ISSUE 1st REVISION	

* PLEASE IGNORE CHINESE CHARACTERS WHICH ARE FOR OUR REFERENCE ONLY.

DATE 02.18.98
DWG 林慶興
CHK
APPD
PROCESS NO. E
HIWIN® BALLSCREWS